

Mono Lake Newsletter

Fall 2000
Volume 23, Number 2



MONO LAKE
COMMITTEE

Mono Lake Office Information Center and Bookstore

Highway 395 at Third Street
Post Office Box 29
Lee Vining, California 93541
Phone (760) 647-6595

Los Angeles Office

322 Culver Blvd.
Playa Del Rey, California 90293
Phone (818) 716-8488

On the Internet

www.monolake.org
info@monolake.org

Staff

Shelly Backlar Development Director
Kirsten Brady Canoe Coordinator
Lisa Cutting Environmental Resource Coordinator
Ramona Robbins Clark Retail Operations Manager
Heather Cleary Retail Assistant
Jeff Darlington Office Director
Arya Degenhardt Communications Coordinator
Santiago Escruceria Outdoor Experiences Coordinator
Heidi Hopkins Eastern Sierra Policy Director
Donnette Huselton Bookkeeper
Geoffrey McQuilkin Executive Director, Operations
Bartshe Miller Education Director
Matt Moule Education Assistant
Gary Nelson Canoe Tour Supervisor
Shannon Nelson Development Assistant
Brett Pyle Membership Coordinator
Craig Roecker Mono County Outreach Coordinator
Greg Reis Information Specialist
Frances Spivy-Weber Executive Director, Policy
Laura Walker Bookstore Manager
Sang Kim, Paul McFarland, and Mona Kremer Interns

Board of Directors

Richard Atwater, Glendale
Martha Davis, Sacramento
Sally Gaines, Mammoth Lakes
Amy Holm, Los Angeles
David Kanner, Redwood City
Andrea Lawrence, Mammoth Lakes
Ed Manning, Davis
Robert Marks, Santa Monica
David Marquart, Lee Vining
Jane Rogers, San Francisco
Guillermo Rodriguez, San Francisco
Tom Soto, Santa Monica

Officers

Sally Gaines and Ed Manning, Co-chairs
David Marquart, Treasurer
Tom Soto, Secretary
Frances Spivy-Weber, Executive Director, Policy
Geoffrey McQuilkin, Executive Director, Operations
Brent Coeur-Barron, Corporate Counsel

Directors Emeriti

Grace de Laet, San Francisco
Helen Green, Berkeley
Mary Hanson, Swall Meadows
Genny Smith, Mammoth Lakes
Ed Grosswiler, Portland, Oregon

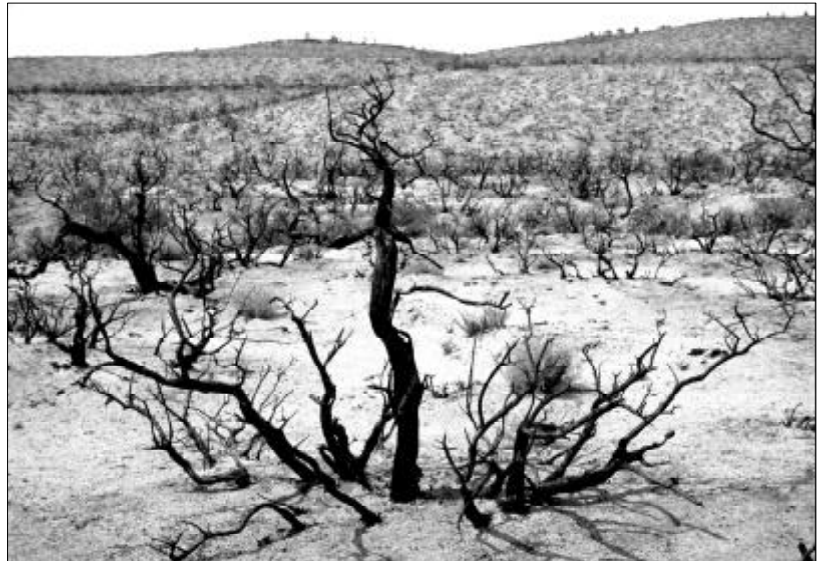


Amazingly clear water is one of the more subtle signs of fall in the Mono Basin. When you're down at the lakeshore with 25 second graders trying to catch brine shrimp you notice not only the clarity of the water but the scarcity of the brine shrimp. It's fall, and if the clarity of Mono's waters haven't told you then the chill in the early morning air and the changing colors of the aspen, cottonwood, and willow trees surely have.

Even though it is still sunny out, here in the office we're working up a storm. We've been keeping an eye on the local highway widening project, so check out the article on page 3 to see what has been happening. There are some wonderful stories from this year's Outdoor Experiences program and you can find those on page 6. Find out why the lake level is dropping on page 10, and why Mono Lake should receive Important Bird Area status on page 8. We've put together quite a collection of books and gifts in the Fall Catalog, so make sure to take a look in there too.

Have a wonderful fall!

—Arya Degenhardt



New growth flourishes amongst charred remains in the area burned in the May 2000 Lee Vining Canyon fire. Some rabbitbrush regrew enough to bloom late in the summer.

Mono Lake Committee Mission

The Mono Lake Committee is a non-profit citizens' group dedicated to protecting and restoring the Mono Basin ecosystem, educating the public about Mono Lake and the impacts on the environment of excessive water use, and promoting cooperative solutions that protect Mono Lake and meet real water needs without transferring environmental problems to other areas.

Mono Lake is a part of the Western Hemisphere Shorebird Reserve Network, a member of the international Living Lakes partnership (www.livinglakes.org), designated as an Outstanding National Resource Water under the Clean Water Act, and home to a National Forest Scenic Area and a California State Reserve.

The *Mono Lake Newsletter* is a quarterly publication on the Mono Lake Committee. Written material contained in this newsletter may be quoted or reproduced for review, news reporting, educational purposes, or related non-profit uses; a copy of the publication is requested. Reproduction or quotation for other purposes may be approved upon written request. ISSN #0275-6633. Copyright © 2000 Mono Lake Committee.