



# 2013 MONO LAKE COMMITTEE ANNUAL REPORT



FROM THE  
EXECUTIVE DIRECTOR AND BOARD CHAIR

Autumn 2013

Together we stand 16,000 members strong, ready to speak on Mono Lake's behalf whenever and wherever necessary—thank you for your support!

We're excited to report that visitors to the Mono Lake Committee headquarters in Lee Vining have been enjoying our fully renovated building exterior. New features include a public gathering space, greywater system, handicapped access, and additions such as a water bottle filling station and concrete Mono Lake map, all thanks to a generous bequest from Mono Lake enthusiast Grace de Laet. This remodel provides enhanced public services and shows our commitment to the future of the Committee.

One standout project from last year is our focused effort to assure that the Los Angeles Department of Water & Power implements the science-based stream restoration program required by the State Water Board. As of August 2013, we are happy to report success, with many details reported in the *Mono Lake Newsletter*! Now to the implementation: as members know, we'll be working to get on-the-ground results for many years yet.

We have to tackle critical Mono Lake issues as they arise, and as a result our enclosed financial numbers for 2012 show us running a deficit for the year. Our revenues are strong, but our expenses exceeded income as we deployed the resources we need to achieve stream restoration solutions. We're prepared financially for these situations and have been working carefully to steer 2013 back into balance.

As important as financial reports are, they do not cast much light on our success in achieving our real purpose as an organization: making positive change for Mono Lake, its tributary streams, and its surrounding lands. Are we succeeding? The answer is clearly yes, and resources like the *Mono Lake Newsletter* and Mono Lake Website ([monolake.org](http://monolake.org)) chronicle our projects both small and large.

The greatest measure of our work together for Mono Lake can only be illustrated here in the Eastern Sierra: the rising waters of Mono Lake, the streams returning to health, the phalaropes skimming over lakeshore tufa, the Los Angeles youth learning why water conservation matters, and the scientists studying the issues that will be our future work. Long Live Mono Lake!



Geoffrey McQuilkin



Sally Gaines



## MONO LAKE COMMITTEE



### 2012 Staff

Geoffrey McQuilkin, Executive Director  
Lisa Cutting, Eastern Sierra Policy Director  
Bartshé Miller, Education Director  
Arya Degenhardt, Communications Director  
Rosanne Catron, Office Director  
Ellen King, Membership Coordinator  
Greg Reis, Information & Restoration Specialist  
Betsy Reifsnider, Sacramento Policy Associate  
Santiago Escruceria, Outdoor Experiences Manager  
Herley Jim Bowling, Los Angeles Education Coordinator  
Jennifer Odum, Los Angeles Outreach Education Coordinator  
Elin Ljung, Communications Coordinator  
Jessica Ashley, Information Center & Bookstore Manager  
Donnette Huselton, Bookkeeper  
Carolyn Weddle, Project Specialist  
Jackie Williams, Jessica Workman, Retail Assistants  
Jessica François, Terry McLaughlin, Outdoor Education Instructors  
Gary Nelson, Canoe Tour Supervisor  
Angie Glaser, Canoe Coordinator  
Erica Tucker, Birding Intern  
Benjamin Hand, Max Henkels, Nick Holt, Erik Lyon,  
Whitney Patterson, Lynette Villagomez, Mono Lake Interns

### Board of Directors

Sally Gaines, Chair, Mammoth Lakes  
Tom Soto, Secretary, Santa Monica  
David Kanner, Redwood City  
Martha Davis, Riverside  
Vireo Gaines Schiller, Ridgecrest  
Richard Lehman, Fresno  
Sherryl Taylor, Mammoth Lakes  
Doug Virtue, San Pedro  
Brent Coeur-Barron, Corporate Counsel, Newport Beach

### Directors Emeriti

Helen Green, Berkeley  
Ed Grosswiler, Portland, Oregon  
Genny Smith, Cupertino

For 35 years, the Mono Lake Committee has been inspired by our love for this beautiful place, where a remarkable salt

lake lies at the center of a landscape and ecosystem unmatched elsewhere on earth. Our vision since 1978, shared among 16,000 members, is of a healthy, protected, and wild Mono Basin and of an organization that seeks positive, principled, proactive solutions to problems. As our founder David Gaines often said, the lake speaks for itself and it touches people's hearts.

To make sure the right thing happens for Mono Lake, the Committee works in diverse arenas including public policy, ecological restoration, public education, water conservation, scientific research, and hands-on stewardship.

We are an optimistic community of people who strive for thoughtful solutions to problems—an approach that has been consistently successful for Mono Lake. With a base in science, we seek out principled solutions to watershed-wide problems and advocate for them strongly.

The Committee's landmark success—saving Mono Lake from destruction due to the excessive diversion of water to Los Angeles—is internationally known. We revitalized California's Public Trust doctrine through a precedent-setting state Supreme Court decision, launched programs to meet Los Angeles' real water needs through water conservation and reclamation, and achieved an extraordinary revision of water rights in the Mono Basin that assures Mono

Lake will thrive and its tributary streams prosper.

Along the way hundreds of thousands of citizens united in support of Mono Lake, and we realized that protecting this place requires us to do even more. Today the Committee tackles new political challenges, advances the restoration of the lake and its recovering streams, shares this special place through innovative education programs, and broadens Mono Lake knowledge through scientific research. As always, we provide constant vigilance to protect our hard-won victories.

The pages that follow illuminate our programs, their achievements, the challenges ahead, and the dedicated team of staff, volunteers, and members who are working on behalf of this most remarkable place.

## MISSION STATEMENT

The Mono Lake Committee is a non-profit citizens' group dedicated to protecting and restoring the Mono Basin ecosystem, educating the public about Mono Lake and the impacts on the environment of excessive water use, and promoting cooperative solutions that protect Mono Lake and meet real water needs without transferring environmental problems to other areas.



Top: OE participants from South El Monte High School visit the County Park boardwalk.  
Middle: Staff from the Bureau of Reclamation along Mono Lake's south shore in May 2012.  
Bottom: Arya Degenhardt steers a canoe for employees of Patagonia clothing company.

# PROTECTION



## Protecting Mono Lake, its streams, and its surrounding lands requires nimble advocacy,

thoughtful planning, and continuing vigilance. Mono Lake needs ongoing citizen involvement to assure that protection remains in place and strong.

Mono Lake faces many challenges familiar to natural areas across the state: increasing demand for water, poorly-planned development, increasing recreational use, shifting politics, underfunded management agencies, and climate change, to name some big ones. Other challenges are unique to this place, such as maintaining the lake's balanced water plan within the extended watershed of Los Angeles.

At times our protection work requires us to speak strongly on behalf of Mono Lake's interests. California's budget woes, for example, lead to the 2011 proposal to close the state park at Mono Lake, despite the low savings that would result and the high economic and resource value of Mono Lake remaining a protected water body and special visitor designation. We worked with the local community, policymakers in Sacramento, our attorneys, state park officials, and thousands of letter-writing members to help craft a parking fee solution to keep the park open and operating for years to come.

Our long history of engagement with Mono Lake water issues provides the critical expertise needed to assure that promised protections are put into place. For example, the Committee is still engaged in an



intensive, multi-year analysis and discussion about the Los Angeles Aqueduct system in the Mono Basin. We expect the outcome to be infrastructure upgrades that result in modern aqueduct facilities. The amount of water flowing to Los

Angeles will remain unchanged, but Mono Basin streams will finally get the amount of water they need in the seasons when they need it most. This will meet State Water Board mandates to maximize the recovery of stream health while minimizing the impacts of continuing water diversions to Los Angeles.

In late 2011 the Los Angeles Department of Water & Power proposed to cease the annual Mono Lake monitoring program required by the State Water Board. Since monitoring the lake is essential for measuring its ecological health and recovery status, not to mention legally required, the Committee responded swiftly. In the summer of 2012 the State Water Board ruled that DWP must continue the monitoring program without interruption.

The Committee also seeks to respond rapidly to developing situations, such as a proposed Caltrans

*Top: Committee staff hear about Caltrans' Lee Vining Rockfall Project along Highway 395.  
Middle: OE students from LA Education Corps write in their journals overlooking Tioga Lake.  
Bottom: Mono Lake Tufa State Natural Reserve Interpretive Specialist Dave Marquart talks with visitors at the Old Marina recreation site at Mono Lake.  
Right: Erica Tucker and Rosanne Catron during the Great Sierra River Cleanup.*

project to reduce rockfall danger from roadcuts on Highway 395 near Old Marina. Committee staff met with Caltrans to discuss the project, provided extensive feedback and guidance, and recommended a vegetation expert to help with rehabilitation. The resulting project will make the highway safer for motorists, stabilize eroding roadcuts, and assure revegetation success, all without harming Mono Lake.

The Committee is politically active to ensure that the Mono Lake protections we have already won are not eroded. We are engaged with policymakers at the Los Angeles Department of Water & Power (DWP), the Mayor's office, and the City Council, and we speak for Mono Lake in the Green Los Angeles coalition. The Committee works to assure that water conservation solutions are implemented in Los Angeles and continues to serve on DWP's



Recycled Water Advisory Group. In Sacramento we work with legislators, agencies, and conservation leaders, and we continue to advance Mono Lake as a model solution for other California water conflicts.

## MORGAN LINDSAY POLICY COORDINATOR



Morgan Lindsay was drawn to the Mono Basin after learning about the public trust in a class about water policy at Mt. Holyoke College in Massachusetts. "I was captivated by the story of how a small group of people were able to change the course of history

and protect Mono Lake," she says.

Morgan ran the canoe program for a summer before working as Policy Coordinator, and she remembers that powerful moment during canoe tours—"the look on someone's face when *they get it*; the formation of a real emotional connection." She also read the lake level gauge each week, becoming "intimately familiar with how the climate inscribed itself in the lakebed and what was revealed and concealed with each inch of water."

For Morgan, one of the most surprising aspects of working at the Mono Lake Committee was "realizing the true meaning of constant vigilance. The Committee is the trusted voice of reason in all decisions regarding Mono Lake."



Top: Staff from CalTrout, the Mono Lake Committee, and the California Department of Fish & Wildlife at the Los Angeles Department of Water & Power headquarters in LA.  
Middle: An OE group from Casa Esperanza visits the Lee Vining Creek diversion facility.  
Bottom: Every year the Tioga Pass Run starts in front of the Mono Lake Committee.  
Left: Caelen McQuilkin birds in Lee Vining during the Bird Chautauqua.

# STREAM RESTORATION



## Ecological restoration attempts to heal the damage caused by fifty years of excessive water

diversion to Los Angeles. Tributary streams were entirely dewatered, eliminating fish and destroying delta bottomlands full of meandering stream channels, cottonwood forests, and wet meadows rich with wildlife. The diversions lowered Mono Lake by 45 vertical feet, doubled the lake's salinity, drained shoreline lagoons, and ravaged delta marshes. Our success in winning the return of water to Mono Lake and its streams gives us reason to hope that this damage can be healed.

The goal of ecological restoration in the Mono Basin is to rejuvenate the dynamic natural processes of Mono Lake and its tributary streams. In turn, these processes—such as springtime flooding, natural reseeding, and ponding of lakeshore lagoons—will reestablish natural conditions. The goal isn't to recreate an exact replica of what existed a century ago; instead we seek to achieve healthy, self-supporting lake and stream systems that will thrive into the future.

The Committee plays a critical role in transforming the restoration actions required by the State Water Board into on-the-ground rejuvenation. In this ongoing work we use our hydrological, legal, engineering, and restoration science expertise to ensure that goals are achieved and DWP restoration projects are the best they can be. We are also the

“eyes and ears” of restoration, using our local presence to verify required streamflows and monitor critical restoration indicators.

In 2010 the Committee began a facilitated negotiation process with DWP, California Trout, and the California Department of Fish & Wildlife designed to find feasible ways of implementing the science-based restoration flows that have been prescribed for Rush, Lee Vining, Walker, and Parker creeks. The process, under direction from the State Water Board, follows a decade of intensive scientific study. It should result in Mono's tributaries receiving the amount of water they need in the seasons when they need it most to assure their return to health.

Reconstruction of the Lee Vining Creek diversion dam some years ago shows a path forward for this process—its upgraded infrastructure allows stream sediment to pass downstream and better delivers mandated streamflows. It shows what could be done at Grant Lake Reservoir's dam as well, where DWP's World War II-era infrastructure hampers delivery of critical streamflows to Rush Creek. Planning for a modern outlet



Top: Lynette Villagomez and Max Henkels lead restoration volunteers at Old Marina.  
Middle: A volunteer group from the Patagonia clothing company visits Mill Creek.  
Bottom: Girl Scout Troop #8341 celebrates a good day of pulling out invasive plants.  
Right: Committee Board member Sherryl Taylor pitches in to remove invasive plants at Old Marina.

structure at the Grant Dam is a critical component of the facilitated process.

The long-running Committee effort to restore Mill Creek, Mono Lake's third-largest tributary, continues as we work with agencies and water rights holders to advance a win-win solution that will restore the downstream complex of riparian forests, wet meadows, and delta marshes. Southern California Edison will soon be making critical improvements to their hydropower facilities that will result in Mill Creek getting its fair share of water. In anticipation of that happening, in 2012 the Committee devoted over 100 hours to clearing out invasive plant species white sweet clover and bouncing bet so that native tree seedlings can grow successfully.

Restoration is the work of experts and volunteers both, and the Committee leads numerous hands-on projects that enhance the effort, such as planting trees with both local elementary school students and Los Angeles youth. Over the past two decades the Committee has led the planting of over 5,000 trees on Mono's tributaries.



## ERIK LYON MONO LAKE INTERN



Whitman College's Semester in the West program first brought Erik Lyon to Mono Lake. The Mono Lake internship fit perfectly with his studies in economics and biology—he says “the opportunity to engage in

sustainable resource use and environmental education of an incredible ecosystem was too good to pass up.”

Erik took to South Tufa tours like a grebe to salty water. “It’s great to see visitors get excited, whether they are watching tufa form, catching brine shrimp, or hearing about the water story. People are smiling, asking great questions, and they’re just jazzed about Mono Lake!”

The Rush Creek delta is Erik's favorite Mono Basin spot. He says, “my visits there have almost always been solitary, either early in the morning or just before dusk. Every time I've been there, I've been surprised by a chance encounter: a buck crossing the creek 15 feet in front of me, a harrier elegantly flying low above the marsh, or a cadre of young coots venturing tentatively out of the reeds.”



Top: OE students from Roosevelt High School remove invasive sweet clover at Old Marina.  
Middle: Morgan Lindsay works at Rush Creek.  
Bottom: Volunteers from Patagonia's Reno warehouse pull invasive sweet clover at the David Gaines Memorial Boardwalk near Old Marina.  
Left: Lynette Villagomez measures streamflow in lower Mill Creek.

# EDUCATION



## To share the sense of wonder and connection that Mono Lake and the Mono Basin evoke,

the Committee's education program offers an array of popular experiential opportunities. This remarkable place is rich with diverse natural history, offering much to discover.

For students and youth, we use science-based learning to build awareness of the natural world and to foster a sense of stewardship. For dedicated Mono Lake enthusiasts, we provide specialized, expert-led opportunities. And for the general visitor, our goal is to increase understanding and appreciation of the Mono Basin ecosystem, the Mono Lake water issue, and the Mono Lake Committee's values.

In 2012, the Committee successfully provided education programs for tens of thousands of people. Some highlights: canoe tours and South Tufa walks introduced



over 2,400 people to Mono Lake. Forty-nine Field Seminar program days immersed enthusiasts in topics from basketry to bighorn sheep. The 11<sup>th</sup> annual Mono Basin Bird Chautauqua sold out with 264 participants. In our focused environmental education program, Committee staff worked with 29 groups and 703 students to enhance their Mono Lake visits. And the Mono Lake Volunteer Program placed 45 volunteers in the field for daily visitor interaction throughout the summer.

At the Information Center & Bookstore we helped more than 55,000 people enjoy their Mono Basin visits. On the internet, nearly half a million individuals accessed our Mono Lake Website ([monolake.org](http://monolake.org)). And the *Mono Lake Newsletter*, our flagship publication, continued to provide news of substance to our 16,000 members and the visiting public.

2012 marked the 19<sup>th</sup> year of our Outdoor Experiences program for Los Angeles youth. Through week-long visits, we provided 1,223 student days of education, connecting the following 23 groups with the source of their water at Mono Lake.

- Sierra Expeditionary School, Lake Tahoe
- South El Monte High School, South El Monte
- Port of Los Angeles High School, San Pedro
- Roosevelt High School, Los Angeles
- Neighbors Acting Together Helping All, Pasadena
- 3 Girl Scout Troops, Pasadena & Los Angeles
- Pico Youth & Family Center, Santa Monica
- Los Angeles Conservation Corps, Eco-Academy

Top: OE students from Sierra Expeditionary Learning School get a South Tufa tour.  
Middle: South El Monte High School OE participants near Parker Creek.  
Bottom: An OE group from Communities for a Better Environment look down into Lundy Canyon from high atop a Sierra ridge.  
Right: A field seminar group learns about Mono Basin geology at the Aeolian Buttes.



- 2 Asian American Drug Abuse Prevention groups, Los Angeles
- Casa Esperanza, Panorama City
- The Renaissance School, Oakland
- Clark County School District, Las Vegas, NV
- Beyer High School's Global Lab, Modesto
- School of Communications: New Media & Technology, Los Angeles
- 6 Communities for a Better Environment groups, Huntington Park

In 2012 we developed an evaluation system for the Outdoor Experiences program to better understand and track participants' knowledge and personal growth during their time in the Mono Basin. Every group surveyed showed significant increases in knowledge of Mono Lake and their watershed as well as an increased willingness to conserve water. These results show where our teaching can improve, but gratifyingly confirm what we have always known: the program changes students' lives in meaningful ways.

If you visited in 2012, you probably noticed the major renovation project going on in front of the Information Center & Bookstore. Thanks to a generous bequest from longtime member and advocate, Grace de Laet, who passed away in 2009, we remodeled the outdoor space to include a wheelchair lift, a water bottle filling station, a scale model map of Mono Lake, an elevated deck with seating, and a greywater system, among other improvements. The exciting result is a welcoming space that invites people in to learn more about Mono Lake and what they can do to help. Thank you, Grace!

## JESSICA ASHLEY

### INFO CENTER & BOOKSTORE MANAGER



Jessica Ashley took a job at the Mono Lake Committee without ever having been here. She says, "The first time I laid eyes on Mono Lake was on my drive into Lee Vining from Boulder, Colorado. Coming out of the Jeffrey pine forest heading west on Highway 120 revealed a vastness that I was not expecting."

One of Jess' favorite parts of her job is "all of the field seminars that I am fortunate enough to be involved with." She loves the opportunity to "mix education with the opportunity to talk about Mono Lake with members."

In the bookstore, Jess gets to interact with visiting members every day. "Members support us in ways in addition to funding. They are the ones who show up for restoration projects, volunteer for the Bird Chautauqua, and walk into the door excited to show friends from all over the world our *Mono Lake Story* DVD. Members are why Mono Lake is still here," she says.



Top: OE students from Communities for a Better Environment reach the top of the Mono Basin watershed near Yosemite.  
Middle: West Tech High School students from Las Vegas get a South Tufa tour.  
Bottom: Communities for a Better Environment participants go canoeing on Mono Lake with Santiago Escruceria.

# SCIENTIFIC RESEARCH



The Mono Lake Committee believes science is a critical base for our policy positions, a

guide for restoration, and an inspiration for understanding Mono Lake. Since 1976, scientific research has provided ecosystem and landscape knowledge that is the foundation of Mono Lake's protection. We know that sound science will be the basis of land and recreation management decisions that will shape the Mono Basin for years to come.



science with youth education, and established a clearinghouse of Mono Basin scientific information at [monobasinresearch.org](http://monobasinresearch.org).

After the 1994 State Water Board decision, we

catalyzed the formation of a cross-disciplinary science advisory council to advise us and others on the scientific side of the new policy challenges we knew were coming. One of the questions we faced was simple: how do we ensure that the tradition of scientific study at Mono Lake continues?

That led to the creation of the Mono Basin Field Station in 2004. Located a few blocks away from our offices in Lee Vining, the Field Station provides lodging, computing, and research support facilities for visiting researchers, office space for established long-term projects, and basic equipment in support of field studies.

We set three goals: (1) enhance the scientific knowledge of Mono Lake, its tributary streams, and the surrounding uplands, (2) foster collaboration and information exchange among scientists in diverse areas of expertise, and (3) infuse our diverse Mono Basin education programs with opportunities to engage scientists and participate in scientific work.

The facility filled immediately; in subsequent years we've pressed additional space into service and still find demand for the facility to be overwhelming.

Since its opening, the Field Station has supported 108 researchers working on 69 projects. Topics of study range from neotropical migratory birds, Greater Sage-grouse, swallows, and Willow Flycatchers to geology, paleoclimatology, and geomicrobiology. We're happy to be supporting teams from universities, public agencies, and fellow non-profit organizations.

The insight gained through science informs

Top: Julia Runcie and Morgan Lindsay scan Lundy Canyon's slopes for bighorn sheep.  
Middle: Lee Vining High School students test Mill Creek's water quality.  
Bottom: Mammal expert John Harris describes a chipmunk after catching it in a live trap.  
Right: Bird researcher Kristie Nelson bands a California Gull chick.

management actions. For example, 2011 marked a critical season for the endangered Willow Flycatchers living along Rush Creek. After a peak of 16 breeding adults were observed in 2004, the population has declined steadily since, with only one nest fledging two chicks in 2009. This decline is due primarily to predation by Brown-headed Cowbirds, which thrive in unnatural numbers on birdseed in town. The Committee has implemented a program to reduce inadvertent cowbird feeding and protect the Willow Flycatchers—and we are working with land managers to assure that this once-common species continues to thrive in the recovering forests of Rush Creek.

Groundbreaking research happens in the Mono Basin as well. It's common to see graduate research assistant Guleed Ali working in the Wilson canyon, examining and dating ash layers from Mono Craters eruptions. He then searches for markers of ancient lake beach shorelines, allowing him to match eruptions with lake levels. In this way, he and his advisor are piecing together the Mono Basin's climatic history and can see how it affected water levels in ice-age Lake Russell.



## 2012 AT THE FIELD STATION

### **Archaeological Field School**

San Jose State University  
*Dr. Charlotte Kay Sunseri*  
*undergraduate students*

### **High-resolution chemostratigraphic record of late Pleistocene lake-level variability, Mono Lake, California**

Lamont-Doherty Earth Observatory  
*Dr. Sidney R. Hemming, geochemistry*  
*Guleed Ali, graduate research assistant*

### **Mono Basin paleoclimatology studies**

California State University—East Bay  
*Dr. Scott Stine, paleoclimatologist*

### **Mono Basin Willow Flycatcher project**

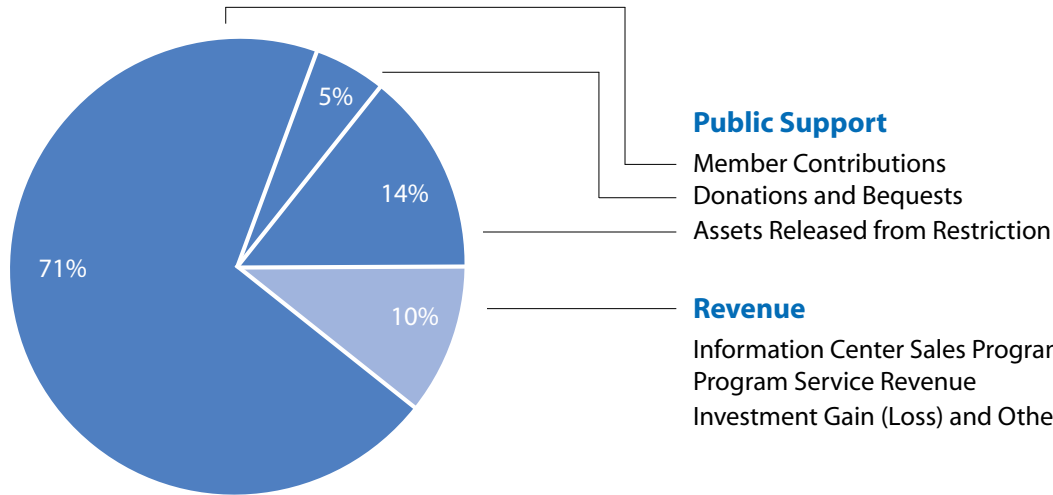
PRBO Conservation Science  
*Chris McCreedy, ornithologist*



*Top: A volunteer prepares to band a California Gull on Mono Lake's islands.  
Middle: Paleoclimatology researcher Guleed Ali discusses ash layers deposited by various Mono Basin volcanic eruptions.  
Bottom: Bird researcher Chris McCreedy points out bird life along Rush Creek.  
Left: Terry McLaughlin assists an Outdoor Experiences student with testing creek water.*

# STATEMENT OF ACTIVITIES

## INCOME



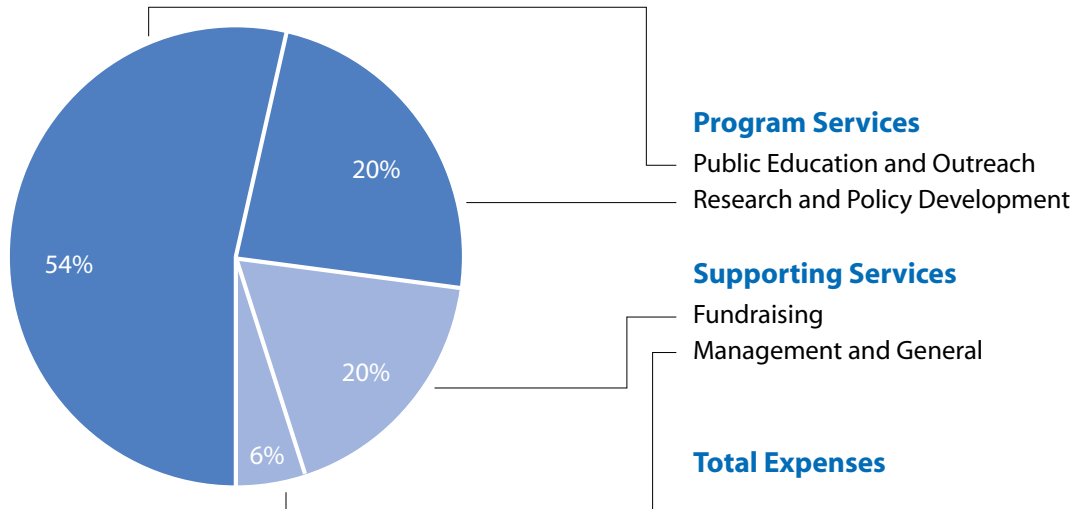
### Public Support

- Member Contributions
- Donations and Bequests
- Assets Released from Restriction

### Revenue

- Information Center Sales Program
- Program Service Revenue
- Investment Gain (Loss) and Other

## EXPENSES



### Program Services

- Public Education and Outreach
- Research and Policy Development

### Supporting Services

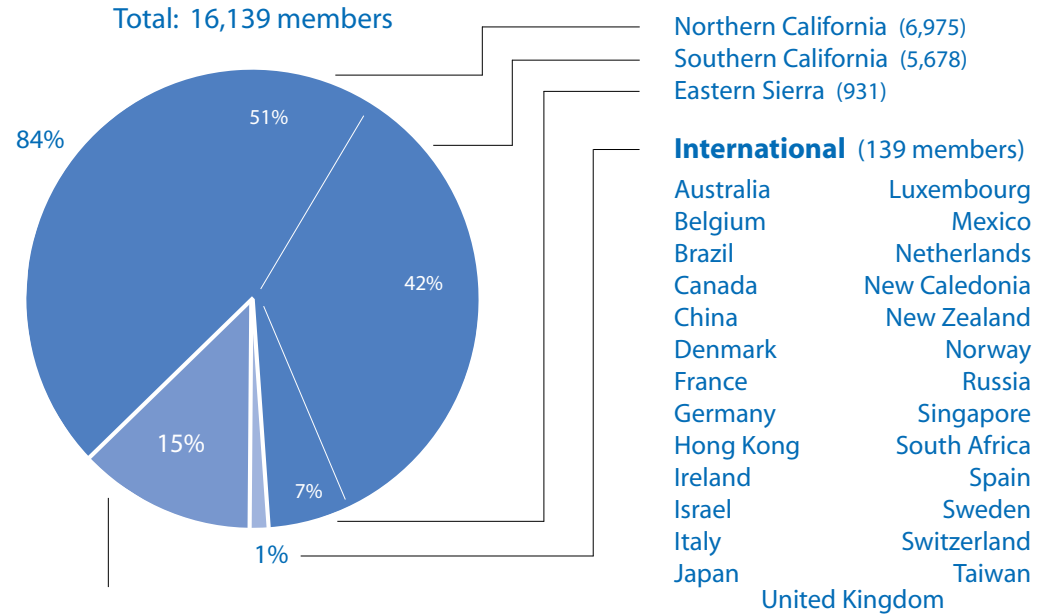
- Fundraising
- Management and General

	2012	2011	2010	2009
<b>Public Support</b>				
Member Contributions	1,186,450	1,109,429	1,030,456	1,060,633
Donations and Bequests	90,945	147,859	497,464	122,254
Assets Released from Restriction	158,444	102,265	149,312	147,752
	<u>1,435,839</u>	<u>1,359,553</u>	<u>1,677,232</u>	<u>1,330,639</u>
<b>Revenue</b>				
Information Center Sales Program	127,712	124,068	131,840	131,987
Program Service Revenue	82,835	82,411	62,247	72,300
Investment Gain (Loss) and Other	42,761	48,518	38,983	49,383
	<u>253,308</u>	<u>254,997</u>	<u>233,070</u>	<u>253,670</u>
<b>Total Unrestricted Income</b>	<b>1,689,147</b>	<b>1,614,550</b>	<b>1,910,302</b>	<b>1,584,309</b>
<b>Program Services</b>				
Public Education and Outreach	1,179,689	1,144,200	1,161,218	914,911
Research and Policy Development	354,492	300,627	258,091	273,417
	<u>1,534,181</u>	<u>1,444,827</u>	<u>1,419,309</u>	<u>1,188,328</u>
<b>Supporting Services</b>				
Fundraising	171,991	263,677	222,078	324,975
Management and General	54,158	64,313	73,530	67,301
	<u>226,149</u>	<u>327,990</u>	<u>295,608</u>	<u>392,276</u>
<b>Total Expenses</b>	<b>1,760,330</b>	<b>1,772,817</b>	<b>1,714,917</b>	<b>1,580,604</b>

# STATEMENT OF FINANCIAL POSITION & MEMBERSHIP

## MONO LAKE COMMITTEE MEMBERSHIP

	12/31/12
<b>Assets</b>	
Cash and Equivalents	15,710
Investments	1,503,148
Property and Equipment	1,335,145
Other Assets	250,816
<b>Total Assets</b>	<b>3,104,819</b>
<b>Liabilities</b>	
Current Liabilities	108,560
Notes Payable	0
<b>Total Liabilities</b>	<b>108,560</b>
<b>Net Assets</b>	
Unrestricted	1,274,407
Temporarily Restricted	1,209,161
Permanently Restricted	512,691
<b>Total Net Assets</b>	<b>2,996,259</b>
<b>Total Liabilities and Net Assets</b>	<b>3,104,819</b>



### Other States / Territories (2,378 members)

Alabama	Idaho	Michigan	New York	Tennessee
Alaska	Illinois	Minnesota	North Carolina	Texas
Arizona	Indiana	Mississippi	North Dakota	US Virgin Islands
Arkansas	Iowa	Missouri	Ohio	Utah
Colorado	Kansas	Montana	Oklahoma	Vermont
Connecticut	Kentucky	Nebraska	Oregon	Virginia
Delaware	Louisiana	Nevada	Pennsylvania	Washington
Florida	Maine	New Hampshire	Rhode Island	Washington, D.C.
Georgia	Maryland	New Jersey	South Carolina	West Virginia
Hawaii	Massachusetts	New Mexico	South Dakota	Wisconsin
				Wyoming

# ECOLOGICAL FOOTPRINT



In the course of protecting Mono Lake it's important to evaluate the impact of our own activities. Each year we assess our primary areas of resource consumption in the office: our carbon footprint from electricity and fuel, and our water use.

Evaluating our footprint raises some tough questions. As a member-supported organization, we have to make sure that efforts to reduce our environmental impact are also reasonable expenditures of member donations.

For example, in October 2012 we installed 33 solar panels on our main office building, thus completing our transition to solar power that began in 2010 with eight panels on the ice house office building. With all the panels working hard under the bright Mono Basin sun, we've been able to cut our grid electricity consumption by more than 50%. Our friends and local experts at Sierra Solar did the installation—thank you Jim, Isabel, and TJ (pictured at left)!

Green investment like solar panels makes good sense, and we'll be using this ecological footprint analysis to continue to help us best focus our efforts.



## WATER

The Committee's water comes from a local single-watershed system that serves the town of Lee Vining. Our office use of water is primarily for the public restroom and landscaping.

In May of 2012 we installed a water meter—the very first in our small town!—so we can monitor our use and be a regional example.

In addition, we connected the public restroom sink with our landscaping via a greywater system. The thousands of visitors to our store now help water the plants every time they use the sink, and we no longer need our irrigation system at all.

Between the water meter's installation in May and the end of 2012, we used 45,000 gallons of water in the public restroom and in our small back office kitchen.



## CARBON

**kilowatt hours**  
**travel mileage**  
**propane used (gallons)**

**CO<sub>2</sub> total (pounds)**

	2012	2011	2010	2009	2008	2007
kilowatt hours	21,704	23,599	24,747	25,130	28,859	29,998
travel mileage	35,551	29,888	47,466	69,065	48,697	40,718
propane used (gallons)	903	1,263	1,086	1,223	897	944
CO <sub>2</sub> total (pounds)	53,006	54,495	59,850	60,813	69,398	69,770

Top: Outdoor Experiences participants from Global Lab at the top of Panum Crater.  
Middle: A group learns about keeping field journals during the Bird Chautauqua.  
Bottom: Sierra Solar installed 33 solar panels on the office roof in October 2012.

Sources: US EPA eGRID database; TerraPass.

# MEMBERSHIP

You, our members, make the Committee successful year after year. From every corner of California, to every state in the country, to many countries around the world, people who care about Mono Lake have united to form the Mono Lake Committee.

We began 34 years ago with the names of a few concerned individuals stored on index cards in a recipe box. Today 16,000 members make the Committee a place-based advocacy organization of tremendous strength.

The Mono Lake website ([monolake.org](http://monolake.org)) continues to be a



popular way to easily stay in touch. Be sure to check out the photos and features—including the Mill Creek webcam, our blog called “The Mono-logue,” e-cards, an easy online donation system, and the ability to manage your membership details online.

Still, the Committee maintains a personal relationship with each member: your mail comes to us in Lee Vining, if you call we’ll answer the phone, and if you visit we are more than happy to share the latest news and bird sightings. We hope to see you here at Mono Lake soon!

## BEQUESTS

Many members help ensure that Mono Lake will remain protected for generations to come by including the Mono Lake Committee in their wills and estate plans. Grace de Laet, a Mono Lake advocate from the earliest days, is one such supporter; her generous bequest enabled our exciting remodel of the front of the Committee bookstore.

Bequest gifts can be directed to particular programs, and they are a meaningful way to create a lasting legacy for Mono Lake. If you’re unfamiliar with the process, don’t worry—it’s less complicated than it might seem, and we’re happy to provide additional information.

## MONTHLY GIVING

The Guardians of the Lake program offers members a convenient way to make regular monthly gifts to the Mono Lake Committee. This is an easy way to help the lake, and it includes special benefits!

Guardians make a monthly pledge by check, credit card, or bank transfer. In exchange, Guardians receive a special monthly letter from Committee co-founder Sally Gaines, offering news on the lake, the Committee, and local happenings. Guardians also receive fewer mailings, a special lapel pin, and recognition in the annual report. To sign up, contact Ellen King ([ellen@monolake.org](mailto:ellen@monolake.org)).



Top: Lee Vining Elementary School kindergartners visit the Committee’s brine shrimp tank.  
Middle: The fall colors in Lundy Canyon are some of the best in the Eastern Sierra.  
Bottom: An Outdoor Experiences student catches brine shrimp during a canoe tour  
Left: Committee staff lead a hike at Panum Crater.

# 2012 DEFENSE TRUST

- = member for 10 or more years
- = member for 20 or more years
- = member for 30 or more years

## MONO BASIN BENEFACTORS

giving \$5,000 or more annually

Anonymous (1)  
Beth & Steven Bangert •  
Ms. Sally Gaines •••  
Mr. Park Loughlin •  
Ms. Irmgard Schmid-Maybach ••  
Genny Smith •••  
Mr. John Warriner •

## AVIAN ADVOCATES

giving \$1,000 or more annually

Anonymous (9)  
Ms. Linda M. Anderson  
Mr. William Anderson  
Alfred C. & Ersal S.  
Arbogast Foundation  
Dr. Jonathan Armstrong  
David & Kathryn Arnold ••  
Mr. Scott Atthowe &  
Ms. Patricia Thomas ••  
Mr. Rich Atwater &  
Mrs. Erin Atwater •  
Mr. Richard Baumgartner &  
Ms. Liz Salzer ••  
Ms. Courtney Benham &  
Ms. Jennifer Benham  
Keith & Atsuko Bennett •  
Judy & Jerome Blackman ••  
Mr. Scot Buell  
Mr. Murray Cherkas  
Mrs. Eunice M. Childs ••  
W. Malcolm & Sharon Clark

Steven & Carolyn Conner •  
Ms. Roberta A. Conroy  
Mark Coolidge •  
Ms. Alice E. Cooper  
Ms. Dawn V. Cope •••  
Ken & Elizabeth Corathers  
Ms. Jeannette Cosby ••  
Mr. Jon H. Cox  
Bryant & Judith Danner •  
Mr. Robert E. Daskam •  
Ms. Alison Davis •  
Mr. Frank Delfino ••  
Ms. Diane Diggins  
Mr. Hap Dunning •  
Ms. Joan Egrie •  
Kenneth & Janie Everett ••  
Ms. Carole Freeman &  
Ms. Sharon McBryde  
Elizabeth M. Gitt Foundation •  
Ms. Patty Glaser & Mr. Sam Mudie ••  
Dr. Dorothea Godt •  
Ms. Barbara Goldstein  
Ms. Susan I. Gottlieb •  
Elizabeth Goodrich Graber Trust ••  
Mrs. Ellen Hardebeck •  
Mr. John Harris •••  
Mr. Robert Hartman •  
Cole & Priscilla Hawkins •••  
Stephen & Susan Hedrick •  
Robert & Phyllis Henigson ••  
Mr. Lynn Higbee &  
Mrs. Nancy Higbee •  
Mr. Barron Hilton  
Ms. Heidi Hopkins •  
Elgian Hurley •  
Ms. Judy Jankauski •  
Mr. David Kanner ••  
Mr. Tim Keenan ••  
Mrs. Karen Lively &  
Dr. Judy Diana Lively  
Chris Lizza •  
Richard & Catherine  
MacDonald ••  
Ed & Maria Manning •  
Phillips & Emily Marshall ••  
Mr. Steven Matuszak •  
Daniel & Mary Mazmanian ••  
Ms. Connie Millar •

Mr. Walter E. D. Miller •  
John & Linda Muckel Foundation  
Joseph & Anna Natter ••  
Mr. David Oppenheim &  
Mrs. Dinah Oppenheim  
James & Carol Patton ••  
Tim & Pat Preston •  
Mrs. Mary Lou Randall &  
Mr. Ted Randall  
Mr. Darryl Richman ••  
Betsy Rieke •  
Gloria Salick •  
Ms. Mary Sasse  
Gary & Elisabeth Schwarzman ••  
Mr. Milus Scruggs ••  
Glenn Skinner ••  
Mr. Sergei Smirnoff, Jr. &  
Ms. Nancy Milliken ••  
Mr. Leverett Smith &  
Ms. Gretchen Peterson •••  
Richard & Sandra Smith •  
Ms. Nancy States  
Frank & Marie-Agnes Stephens •  
Mr. John Studebaker •



Above: Committee staff and volunteers prepare snacks for cyclists participating in the High Sierra Fall Century bike ride.

Mr. Mike Swimmer •  
Tony & Sherryl Taylor •  
Mr. Warren Unck •  
Ms. Jan Vannatta •••  
Mr. Doug Virtue & Ms. Kathy Day •  
Mr. Allen B. Ward ••  
Mr. Robert Warnock &  
Mrs. Martha Warnock •  
Mr. Peter Watkins ••  
Michael Weber •  
Mr. Howard J. Whitaker •  
Mr. Bryan J. Wilson •  
Mr. Ray Winter •  
Peg Yorkin •

## STREAM STEWARDS

giving \$500 or more annually

Anonymous (2)  
Mr. Robert Amarante &  
Mrs. Angela Amarante ••  
Bruce & Patti Amesbury •  
Grace & Bob Anderson ••  
Eric & Yung San Anderson ••  
Margaret Anderson  
Mr. Vic Avila  
Ms. Verna Ayer  
Mrs. Nadine Baggs & Mr. Lloyd Baggs  
Sally Barngrove •  
Carroll & Susanne Barrymore •  
Ms. Carol L. Benedetti  
Ms. Yvonne M. Blaine •  
Ms. Barbara Blake •  
Stan & Sharon Bluhm •  
Deborah Bogen ••  
Ms. M. S. Bordwell  
Ruth & Raymond Borun ••  
Robert & Barbara Brandriff ••  
Ms. Michelle Brodie •  
Mr. Ray Broguiere •  
Ms. Janet E. Brown •  
Ms. Mary J. Brown

Mr. Thomas Browne •  
Ms. Michelle Browner  
Mr. Jeff Burch &  
Ms. Christine Weigen •  
Lester & Jill Cannon ••  
Mr. Timothy Caraher  
Ms. Sue Carlisle  
Mr. Luke Castell  
Mr. Park Chamberlain •  
Ms. Rebecca Chavez •  
Ms. Lynn Chiapella •  
Joan & Andrew Chittea •  
Mr. Mark Cocalis •  
Ms. Kris Coffey  
Mr. Robert Coombs •  
Ms. V. M. Cornwell •  
Mr. James Costello  
Mr. Ron Craig  
Mr. Daniel Cumings •  
Lynden F. Davis  
Mr. Luke Davis  
Roger de Freitas  
Joe & Christine Decker ••  
Raj & Helen Desai ••  
Mr. & Mrs. R. H. Dick •  
Mr. Richard G. Dooley •  
Ms. Janice Dresser  
Thomas & Anne Duffy  
Mr. Philip Easton •  
Ms. Patricia Eastwood ••  
Mr. Russell Edwards •  
Mark & Jane Eiduson •  
Mr. David Engelstad &  
Mrs. Jill Engelstad  
Hans & Diane Ernst ••  
Mr. Bryan Fandrich &  
Mrs. Bonnie S. Fandrich  
Mr. David Feindel  
Carrie & George Fields •  
Mr. Bob Finch  
Mr. Richard Foye & Mrs. Cathy Foye •  
Mr. John Fries •  
Mr. Jerry Ganz ••  
Mr. Steven Ganz & Ms. Judith Tick •  
Mr. E. Norman George  
Ms. M. Emily Gere •  
Ms. Liliane Gersh  
Mr. Tom Gertmenian •

Rob & Diane Gingell •  
Ms. Helen A. Green •••  
Mr. Rusty Gregory &  
Mrs. Bonnie Gregory  
Mr. Paul Grishaber •  
Dan & Donna Hafeman ••  
Mr. Francis Hagan  
Dale & Coleen Hall •  
Ms. Melissa Jones Hamilton  
Mrs. Nicole Headrick &  
Mr. Jerry Headrick, Jr.  
CleoBell Heiple-Tice •  
Mr. James T. Held &  
Ms. Sachiko Kohatsu  
Mr. Arthur D. Hellman ••  
Mr. David H. Hepler •  
Bill & Virginia Hilker •  
Jonel Hill  
Mrs. Eileen Hinkson •  
Mr. Jan Z. Hintermeister •  
Ms. Anita Hirsh  
Ms. Leslie Hites  
Mr. Charlie Hoare  
Ms. Elizabeth Hoffrogge  
Christopher & Rhoda Holabird •  
Bea Matas Hollfelder •  
Mr. Carlton Honebein  
Ms. Susan D. Hopkins ••  
Ms. Catherine Owen Horne •  
Ms. Ann Howald •  
Mr. Otto Hub  
Mr. Stephen Hutchinson &  
Mrs. Audrey Hutchinson •  
Hideo H. Itabashi, M.D. •  
Mr. Zachary Jarvis &  
Mrs. Sarah Jarvis  
Mr. Fred Jee & Mrs. L. Louise Jee  
Ms. Brielle Johnck &  
Mr. Stephen Schmidt ••  
Mr. James Kenney  
Ms. Barbara Keogh  
Mr. Robert Kimberling •  
Mr. Paul C. Klahr ••  
Mr. Stephen M. Knapp ••  
Ms. Rebecca Kuga  
Ms. Sarah Kupferberg &  
Mr. Sydney Temple •  
Mr. Gerry Langlois



# 2012 DEFENSE TRUST

Guy & Gail Lefebvre •  
Richard & Virginia Lehman  
Jeanette & Olaf Leifson •  
Mr. Hollis Lenderking •  
Mr. Ted Lindsay & Mrs. Nan Lindsay  
Mr. Dave Luders & Mrs. Diane Luders  
Greg & Mary Lugo •  
Robert & Julie Maclean •  
Mr. Colin Magowan  
Mr. Alan Magree ••  
Hildegard Manley •  
Mrs. Esther A. Marquart •  
Ms. Geneva P. Martin ••  
Ms. Dorothy Martinez ••  
Mr. Dennis Martino ••  
Mr. Daniel Matarozzi &  
Ms. Sharon Hawley ••  
Ms. Dorothy Mayer  
Mr. James McGrew  
Hugh & Katharine McLean •••  
Ms. Madelyn Messner &  
Mr. Ernie Messner •  
Mr. Peter Morris •  
Mr. Michael Morris  
Mr. Bruce Muirhead •  
Barbara & Paul Murphy •  
Mr. John S. Nelson •  
Ms. Gloria Newhouse ••  
Ms. Martha H. Oehler ••  
Ms. Anne Palumbo  
Mr. David Parquet  
Mr. Stephen Pater  
Mr. William D. Patterson •  
Mr. Donald Petzold •  
Mr. Marc Picard •  
Mr. James Polak  
M.F. Mert Preston •  
Dr. Tom Pringle •  
Thomas M. & Jody Z. Priselac  
Mr. Jerry E. Prochazka •  
James & Elizabeth Ralston ••  
Mrs. Gordon R. Ray  
Mr. Christopher A. Reed •  
Mr. Charles Reed, Jr. &  
Mrs. Roberta Reed •  
Mr. Robert W. Reynolds  
Dr. Jordan S. Rinker ••  
Ms. Nancy J. Robertson ••

Ms. Ann Robinson •  
Ms. Tracy Rodgers &  
Mr. Richard Budenz  
Santa Monica Bay Audubon Society ••  
Mr. Robert L. Schneider ••  
Ms. Mary Soonover &  
Mr. Mark Cowin  
Mr. W. Leonard Seeley  
Linda S. Serna, M.D. •  
Mr. Richard M. Shamban •  
Dr. Neal K. Sheade •  
Mr. Jacob Sigg •  
Mr. Fred Simon •  
Mr. Richard T. Siri ••  
Mr. Donald M. Smith ••  
Mr. Gary Smith & Mrs. Janet Smith  
Ms. Margaret Songster •  
Sorensen's Resort •  
Tom & Nicki Spillane ••  
Mr. Kevin Starr  
Mr. & Mrs. Steven Stegmaier •  
Greg & Sarah Stock  
Ms. Helga Martin Strong •  
Mr. James Strong &  
Ms. Barbara Hartford  
Mr. John F. Talhelm &  
Mrs. Josephine Talhelm  
Mr. David Thomson •  
Mr. George Tredick ••  
Allen S. Trux ••  
Jerry & Ilona Ulrich •  
Mr. & Mrs. Sloan Upton •  
Chris Uribe  
Peter & Virginia Van Kuran •  
G. A. & Marsha von der Lieth •  
Mr. John Vondracek •  
Ms. Brenda Wade  
Ms. Kathleen Walker  
Mr. & Mrs. Thomas Warne  
Mr. Norman Waters ••  
Mr. Bob Watts  
Ms. Phyllis Weber •  
Mr. Ken Weinstock  
Ms. Virginia Q. Welsh •  
Ms. Ellen Werback ••  
Mr. Robert West ••  
Dr. & Mrs. C.E. Wheatley, III ••  
Bryce & Wilma Wheeler ••

Mr. Dale L. Wierman ••  
Robert & Donna Willey  
Michael & Evelyn Williams •  
John & Becclee Wilson •  
Mr. Andrew J. Wilson  
Ms. Renee Dake Wilson  
Ms. Kirsten Winter ••  
Mr. David Wiseblood &  
Ms. Nancy Klokner  
Mr. Randy Wittorp &  
Mr. Ted Mazzone •  
Mr. P. J. Wolf & Mrs. Nyla Wolf •  
Alan & Joan Woodman ••  
The Worthington Family ••  
Mr. David G. Youmans ••  
Mr. David Young •  
Mr. Tom Zimoski •



Anonymous (10)  
Ms. Mary Abbott  
Steve Akeson & Chris Knowlton •  
Ms. Carolyn D. Akopian  
Mr. Gary H. Alton ••  
Ms. Maria Alvarado  
Mr. Gary Anderson •  
Mr. George Anderson •  
Ms. Martha Andreani  
Mr. Lloyd A. Andres •  
Mr. Bryan Andrews ••  
Patricia V. Angell •  
Mr. Mike Anthenien •  
Mrs. Louise C. Arnold •  
Ms. Alfonso J. Arredondo  
Mr. John Arthur  
Dennis Ashlock Photography  
Mr. Robert W. Avakian •  
Ms. Robert West ••  
Mr. William E. Downing •  
Ms. Joellin Bacon •

J. W. & Marjorie Bailey ••  
Mr. Harold Bailey ••  
Ms. Jeanne Webber Baird •  
Judge Joan L. Baker &  
Dr. John L. Baker ••  
Mr. Doug Barnett ••  
Mr. James Barnhill  
Mr. Rod Barrette  
Teresa & Don Barth ••  
Ms. Joyce Bartlett ••  
Dr. Scott Bateman &  
Mrs. Serena Bateman  
Mr. Lesley A. Bates  
Mr. Craig Behrens  
Mr. Brendan Belby & Ms. Amber Stott  
Ms. Mildred Benioff •  
Mr. Edward L. Bennett ••  
Ms. Donna Berg •  
Chaplain John W. Berger •  
Mr. & Mrs. George L. Berlacher •  
Michel & Isabelle Bertin  
Mr. Rowland S. Bevans •  
Ms. Suzanne Bevash  
Mr. George Bing ••  
Mr. Michael Bingham  
Thad L. Binkley •  
Mark & Rochelle Bookspan •  
Dr. Kyle Boone  
Mr. Donald R. Borchers  
Olive & John Borgsteadt ••  
Ms. Betty F. Boykin •  
Mr. David Bradford &  
Mrs. Eva Bradford •  
John & Yvonne Branchflower •  
Alton J. & Anna J. Brann  
Mr. Raymond Bransfield •  
Mr. Leigh Brasington ••  
Mr. Arthur Braudrick  
Ms. Mari Bray •  
Mr. John Brenneis &  
Mrs. Aida Brenneis ••  
Ms. Mary E. Brenneisen  
Ms. Joan C. Broer ••  
Brown Family Trust  
Ms. Kris Brown & Mr. Scoby Zook •  
Ms. Martha Brown •  
Mr. Bob Brown  
Andrew C. Browne •

Mr. Charles Bruckart, Jr.  
Larry & Amy Brunton •••  
Ms. Mary Bryan  
Ms. Maggie Bryant ••  
Mr. Dean Buchenauer ••  
Ms. Jane Buck •  
Doug & Lee Buckmaster •••  
Dale & Suzanne Burger ••  
Ms. Beth Burnam  
Neil & Mimi Burton ••  
Mrs. Nora Butler •  
John Caito •  
Ms. Bernadette Callen  
Ms. Philippa Calnan •  
Bob & Vickie Canfield ••  
Tom & Patricia Carano  
Mr. Robert W. Carr ••  
Mr. Robert Carr •  
Mrs. Joan Carroll  
Ms. Jean B. Cassetta •  
Mr. & Mrs. Thomas J. Cerny •  
Mr. Andrew Chaffey  
Nancy & Don Chambers •  
Mr. Duane Chamlee •  
Mr. Theodore Chase, Jr. •••  
Mr. Richard Cheeseman &  
Ms. Kristen C. Nelson  
Jim & Marty Childs •  
Ms. Ann Chiller  
Robert & Bobbe Christopherson •  
Mr. Jack R. Coleman-Levy ••  
Stephen & Sharon Commins  
Mr. Richard L. Conner ••  
Dr. Michael W. Conner  
Mr. Thomas R. Conrow, Jr. •  
Mr. Paul Cooley ••  
Robert & Carol Coon ••  
Ms. Geneva Cooper  
Ms. Susan Coryell  
Mr. Joseph V. Costello, Jr.  
Mr. James F. Cox ••  
Mr. Chris Craig •  
Mr. Jack Crowther &  
Mrs. Pat Crowther •  
Ms. Nancy Cunningham  
Art & Janet Cupples •  
Mr. Gerald Dahl •  
Gerald E. Dalrymple, M.D. •

Gerald I. Dannemiller, D.D.S. •  
Mr. Loris P. Davanzo  
William & Jeanette Davis ••  
Ann & Paul de Bruyn Kops  
Mr. Ronald Dean •••  
Mr. James Derbin •  
Rick & Kathi Derevan ••  
Mr. Louis N. Dery •  
Ms. Kathy Dice •  
Maureen & Robert DiDomenico ••  
Mr. Tom Dodson •  
Mr. Stephen Doyle  
Ms. Mary W. Duquette •  
Paul & Joan Dubow •  
Ms. Kay Duffy •  
Ms. Glenda M. Dugan •  
Mr. David R. Duke &  
Ms. Rava Villon ••  
Mrs. Susan Winter Duncan  
Mr. J. Robert Dymont •  
Mr. Walter G. Eades •  
Mr. & Mrs. John Easley  
Eaton Kenyon Fund of the Sacramento  
Region Community Foundations ••  
Mr. Dan Eisenstein •••  
Jack & Sue Ellis  
Mr. George England •  
David & Christine Erickson ••  
Mrs. Caroline A. Erickson •  
Ms. Audrey Evans  
Ms. Alexandria Fabbro ••  
Ms. Gail Fadenrecht ••  
Ms. Kathryn Fairbrother &  
Ms. Michelle Ramos  
John & Rosemary Farley •  
Mr. Terry Farmer  
The Fendon Trust &  
Ms. Shirley Fendon  
Ms. Arleen Feng ••  
Mr. Thomas Ferguson &  
Mrs. Beatriz Ferguson ••  
Mr. Gary Finstad •  
Mr. Patrick J. Flinn ••  
Ms. Myra Foster •  
Mr. Jim Fousekis ••  
Mr. Edward M. Fowler &  
Mrs. Dorothy J. Fowler •  
Arnold & Norma Funai ••

# 2012 DEFENSE TRUST

- = member for 10 or more years
- = member for 20 or more years
- = member for 30 or more years

Deane & Joan Funk •  
Edith Gaines ••  
Ms. Tamara Galanter  
Mr. Richard Gale •  
Ms. Marilyn Gallaway &  
Dr. Robert Lowen ••  
James & Jan Gardner ••  
Mrs. Mary C. Gardner •  
Ms. Anne Gasior  
Mr. Clarence B. Gauldin •  
John & Andrea Dickey Genette •  
Mr. Steven German •  
Ms. Lorrie Gervin •  
Mr. Stephen Gibson ••  
Jack & Carole Gibson ••  
Dr. William Gilles •  
Mrs. Faye Gillett •  
Ms. Meg Gilmore ••  
Tullio & Valerie Giudici •  
Charles & Nancy Givens •  
Helen Gjessing •  
Mr. Kenneth Gobalet ••  
Mr. Jeffrey A. Goettig •  
Mr. Andrew Goodrich ••  
Mr. Paul Goodwin •  
Ms. Bonnie Gorsic •  
Ms. Patricia Lynn Gotchall •  
Ms. Ann D. Graham •  
Norin & Nona Grancell  
Ms. Marlys T. Green •  
Ms. Dorothy D. Gregor  
Mr. David E. Griffiths ••  
Mr. Gary Grim •  
Mr. Rand Groh  
Tracy Grubbs & Mr. Richard Taylor  
Mr. & Mrs. Robert Gyorj •  
Mr. Ralph Norman Haber &  
Ms. Lyn R. Haber •  
Dr. Peter Hackett •  
Ms. Barbara E. Hadsell  
Mr. & Mrs. Art Haigh  
J. B. Hall ••  
Ms. Elizabeth Hall ••  
Mr. Hoyt Halverson •  
Mr. & Mrs. Newman T. Halvorson, Jr. ••  
Helen Hammer  
Mr. Ben Hammett  
W. James & Mary Hannon, Jr. •

Mr. Tom Hanton ••  
Mr. & Mrs. Paul Harada  
Ms. Anne Harding  
Tom & Kathy Harrington •  
Mr. Roy Harrington  
Joyce C. Harris •  
Mr. Donn Harter •  
Mr. Jerry Hauke •  
Mr. Donald Haworth •  
Mr. James S. Hayes &  
Ms. Catherine Keig

Dwight Sims & Cathie Haynes •  
Mr. Jack R. Hedges &  
Mrs. Anne L. Hedges  
Scott & Claudia Hein •  
Mr. Robert Henley  
Joyce C. Harris •  
Mrs. Claire Heron •  
Mr. Charles Hibbard •  
Mr. & Mrs. Ivar Highberg •  
Mr. Ken Himes •  
Mr. Michael Hogan

Arno R. Hohn, M.D. •  
Mr. Robert Hohne, Jr.  
Mr. William D. Holland •  
Larry & Carol Holt •  
Ms. Virginia Holt  
Ms. Roslyn Holtzclaw •  
Ms. Carolyn Honer ••  
Mr. David Hopper &  
Ms. Dominique Tardif  
Mr. Richard Howard &  
Mrs. Mary Howard ••

Mr. Steve Howard &  
Mrs. Marilyn Howard  
Alan & Sylvia Hugo •  
Mr. Frank Humberstone  
Ms. Erica Husse-Jerome  
Ms. Michele Idera ••  
The Irons Family •  
Dr. & Mrs. Charles Irvin •  
Mrs. Frances Iverson &  
Mr. Jon Iverson  
Rob & Liz Jackson ••  
Mr. Theodore Jackson, Jr.  
Jeffrey & Linda Jahraus  
Mr. David Javorsky  
Mr. Verlyn N. Jensen  
Ms. Joan D. Johnson ••  
Richard & Joyce Johnson •  
Mr. Alexander D. Johnson  
Marilyn C. Jones •  
Mr. Stanley H. Judd ••  
David A. Kadish •  
Mr. Mark Kadzielski  
Mr. Richard R. Kauffman  
Joanne & Dennis Keith ••  
Gary & Jeannie Kennedy •  
Mr. Robert Kerr  
Ms. Shirley Kidner •  
Brad & Linda Kilger •  
Ms. Beth Kimball  
Duncan & Ellen King ••  
Dr. Stefan J. Kirchanski •  
Mr. Joseph Kiskis  
Ms. Sally Kitson  
Britt Klingenberg  
Ms. Julie Klingmann •  
Roger & Georgia Klinkers •  
Ms. Mary E. Knable •  
Ms. Jan Knight  
Attila Konczol •  
Mr. Joe Koontz & Ms. Kathy Scheer ••  
Dr. Neal Kroll •  
Mr. Charles Y. Kuntzman ••  
Barbara & Stan Kus ••  
Dr. Sherill Ladwig  
Ms. Gloria L. Laird •

Mr. David Lamb ••  
Ms. Ellen Lambert •  
Mr. Craig Lanway •  
Mr. Dale R. Laster •  
Ms. Karen A. Latchford ••  
David & Sue Lauritzen ••  
Robert & Beatrice Laws •••  
Lawrence A. Lawver •••  
Ms. Patricia Leahy •  
Mr. Jim C. Lee •  
Mr. Herschel Leffler &  
Ms. Patricia Leffler  
Ms. Carol Leimbach &  
Mr. William Leimbach  
Mr. Timothy Lenehan &  
Ms. Jennifer Fujimoto ••  
Dr. Edwin P. Lennette ••  
Mr. Douglas Leslie •  
Ms. Cornelia Levine ••  
Mr. Mark Lewis ••  
Mr. James R. Lewis •  
Mr. William Lickiss •  
Mr. Alan Lieberman  
Mr. Loyall G. Liscombe •  
Dr. John Little •  
Mrs. Mary Ljung & Mr. John Ljung  
Tom & Holly Love ••  
Mrs. Leonie Luterman  
Mr. John Luther •••  
Mr. Robert H. Lynn ••  
Ms. Susan Lynn •  
John & Inna MacDougall ••  
Mr. Steve MacFarlane  
Yaney L. A. MacIver •  
Robert G. MacLean, M.D. •  
Dr. Bruce MacMillan  
Ms. Marjorie Madonna •  
Mr. Charles Maher  
Keith & Ann Mangold •  
Ms. Martha Manion •  
Ms. Carol Manning  
Ms. Linda Mar •  
Mr. David L. Maris ••  
Mr. Mark Markham •  
Mr. Jay Marks &  
Mrs. A. Marilyn Marks  
Ms. Linda Marshik  
Piero & Jill Martinucci •

## 2012 VOLUNTEERS

Natalie Anaya, San Francisco  
Carlos Ayala, Reno, NV  
Gavin Back, Reno, NV  
Jo Bacon, Mammoth Lakes  
Carolyn Balliet, Mammoth Lakes  
Jenine Beecher, Truckee  
Phyllis Benham, Mammoth Lakes  
Brian Benner, Reno, NV  
Maxine Binn, Mammoth Lakes  
Sharon Bluhm, June Lake  
Stan Bluhm, June Lake  
Dorothy Burdette, June Lake  
Lane Bussa, Reno, NV  
Elizabeth Cassidy, Sparks, NV  
Maura Cassidy, Sparks, NV  
Alexandra Charchalis, Reno, NV  
Kathy Clarke, Modesto  
Jim Clarke, Modesto  
Andrew Coffey, Reno, NV  
Nancy Devon, Olympic Valley  
Jean Dillingham, June Lake  
Danielle Dowers, San Francisco  
Paul Doyle, Aliso Viejo CA  
Glenda Dudley, Reno, NV  
Kathy Duvall, Bishop  
Jeri Edwards, West Lake Village  
Judy Erb, June Lake  
Jon Fairchild, Reno, NV  
Gregor Finke, Reno, NV  
Cathy Foye, Mammoth Lakes  
Rich Foye, Mammoth Lakes  
Hank Garretson, Mammoth Lakes

Vern Gersh, Lee Vining  
Grant Henderson, Reno, NV  
David Hurst, Glendale  
Edyth Irvine, Mammoth Lakes  
Cheryl James, Hawthorne, NV  
Kim Jardine Reiley, Reno, NV  
Celia Johnson, Reno, NV  
Zach Johnson, Balsam Lake, WI  
Kendra Jones, Aliso Viejo  
Amy Keenan, Verdi, NV  
Duncan King, Lee Vining  
Linda LaPierre, Yerington, NV  
Jenna Lavin, Whittier  
Darren Lederer, Vacaville  
Ralph Lederer, Vacaville  
Brendan Lewis, Reno, NV  
Andrew Marshall, Reno, NV  
Michael Mattox, Pinson, AL  
Bridget McHugo, Mammoth Lakes  
Jocelyn McHugo, Mammoth Lakes  
Terry McLaughlin, Lee Vining  
Karen Murphy-Schlaepfer, Mammoth  
Miguel Neri, Reno, NV  
Erika Obedzinski, San Geronimo  
Joel Oberly, Reno, NV  
Nick Ogden, Reno, NV  
Mel Pereira, Fallon, NV  
Rebekah Preble, Reno, NV  
Doris Reilly, June Lake  
Bonnie Reinhold, June Lake  
Craig Richardson, Santa Cruz  
Adam Robbins, Reno, NV

Katherine Roberts, Reno, NV  
Sara Beth Roche, Reno, NV  
Donna Roff, June Lake  
Rick Russell, Santa Monica  
Dustin Sabo, Reno, NV  
Mary Shore, Mammoth Lakes  
Mike Shore, Mammoth Lakes  
Tom Shroeder, Palo Alto  
Donna Sidlin, Dayton, NV  
Mike Sidlin, Dayton, NV  
Joanie Snyder, Sparks, NV  
Rhonda Starr, Mammoth Lakes  
Nancy States, Santa Barbara  
Jackie Stroud, Carson City, NV  
Caron Tayloe, Reno, NV  
Sherryl Taylor, Mammoth Lakes  
Jack Torrey, Placentia  
Igor Vorobyoff, June Lake  
Lee Vorobyoff, June Lake  
Todd Wanner, Lee Vining  
Rebecca Watkins, Lee Vining  
Kathy Watson, Mammoth Lakes  
Lee Whitmer, Modesto  
Sue Whitmer, Modesto  
Rosemarie Willimann, Bridgeport  
Urs Willimann, Bridgeport  
Laurel Winterbourne, Reno, NV  
Barrett Yonns, Reno, NV  
Don Zeleny, Mammoth Lakes  
OJ Zeleny, Mammoth Lakes  
**Coordinators: Janet Carle &  
Rosanne Catron**

# 2012 DEFENSE TRUST

Mr. Peter Mason ••  
 Mr. Charles Massieon •  
 David & Terre Mathiasmeier ••  
 Ms. Andrea Matsushima •  
 Ms. Joan McCauley  
 Mr. Pete McCloskey &  
 Mrs. Helen McCloskey  
 Roger & Judy McClure •  
 Paul & Judith McConnell •  
 Joel & Jean McCormack •  
 Mr. Edward J. McCrea  
 Herb McGrew •  
 Mr. Stephen McKenna  
 Dennis & Joan McNerney ••  
 Ms. Winona D. McNitt •  
 Geoffrey McQuilkin &  
 Sarah Taylor •••  
 Mr. George McQuilkin ••  
 Jim & Sue Mears  
 Mr. Richard P. Meixner  
 Mr. John Melack ••  
 Mrs. William J. Mendoza •••  
 Peter & Carlene Mennen •  
 Mr. Peter J. Metropoulos &  
 Ms. Katherine Simmonds •  
 Mr. Steven R. Meyers  
 Mr. David M. Miller ••  
 Mr. Robert Miller &  
 Mrs. Christine E. Miller •  
 Mr. James W. Miller  
 Ms. Kathy Miller  
 Mr. Rick Miller & Mrs. Judy Miller  
 Mr. D. Lee Mitchell, III •  
 Ms. Annamarie V. Mitchell  
 Stewart and Gerrie Mohr •  
 Robert & Kay Moline •  
 Steve & Sandy Moore •••  
 Ms. Susan Moore &  
 Mr. Peter Woodman •  
 Ms. Shirley Morano ••  
 Ms. Marianne Morgan  
 Ms. Barbara Morgan  
 Frances Morrison •  
 Mr. David Moss •  
 Ms. Margaret Mudy-Perloff •  
 Fraser & Helen Muirhead ••  
 Mr. Wilfred Mundy •  
 Mr. John Murphy &

Mrs. Charlynnne Murphy •  
 Mr. Lawrence Myers, Jr. •••  
 Ms. Masako Nagumo •  
 Mr. Lee Narramore •  
 Ms. Sandee Naylor  
 Mr. Kirk Neely & Ms. Holly Myers  
 Mr. David Negvesky  
 Mrs. Elizabeth H. Nelson ••  
 Mr. Jim Nelson •  
 Bgen Rick Nelson  
 Robert & Elizabeth Neuwirth ••  
 Ms. Margie Nicholson •  
 Mr. Steven Nightingale  
 John & Marian Niles  
 Mr. Michael Nimkoff  
 Mr. William K. Nisbet ••  
 Roger & Ann Noll •  
 Mr. Franklin W. Nordhoff •  
 Mr. Ben Novak  
 Ms. Kathleen Novotny  
 Ms. Corinne Nydegger ••  
 Jack & Judy Obiedzinski •  
 Neil & Joan O'Henley ••  
 Mr. Chris Oman  
 Mr. Paul O'Neil &  
 Mrs. Sally Flory-O'Neil •  
 Ms. Carolyn S. Palmer ••  
 Ralph & Darleen Palmer ••  
 Mr. Noel Park •  
 Mike & Laura Parker ••  
 Mr. Duncan Patten •  
 Mr. Rob Patten  
 Charlotte Pavelko ••  
 Pearring Survivors Trust ••  
 Mr. James G. Pearson •  
 Ms. Anita K. Pearson  
 Mr. Gary Pelzner &  
 Mrs. Elizabeth Pelzner  
 Ms. Glenda Pepin •  
 Mr. Donald Person &  
 Mrs. Judith Person •  
 Mr. John Petter  
 Mr. George Peyton ••  
 Mr. John H. Pfautz  
 Mr. Wayne Pfeiffer  
 Ms. Regina Phelps  
 Mr. Donald A. Philipp •  
 Ms. Alison Platt •

Mr. Kenny Pokora  
 Ms. Virginia Polak •  
 Mr. Mark Poteet •  
 Mr. Richard Price & Mrs. Ellen Price  
 Ralph & Leslie Purdy ••  
 Ms. April Quigley •  
 Dr. Elizabeth Quinn •  
 Mr. Bob Raczkowski •  
 Ms. Mary Raker  
 Ms. Mary Ratner  
 Steven & Carolyn Read •  
 Mr. Glenn Reed •  
 Mr. Allan Reed & Ms. Sharon Paul •  
 Ms. Jean Reiche  
 Curtis & Pamela Reis ••  
 Mr. Alan Rhodes •  
 Mr. David Rice ••  
 Ms. Ida Richards •  
 Brenda & Jim Richmond ••  
 Mr. John Roberts  
 Mr. Michael M. Roberts  
 Mike & Sue Robinson •  
 Mr. Richard Rockwell •  
 Ms. Charlene Roe  
 Mr. Stephen Roscow •  
 Ms. Catherine Rose ••  
 Ms. Shelli B. W. Rose ••  
 Mr. Daniel C. Rose •  
 Ms. Brenda L. Ross ••  
 Mr. Henry Rowen &  
 Mrs. Beverly Rowen  
 Gerard Rudisin ••  
 Mr. Richard L. Russell  
 Mr. Tim Ryan  
 Dr. Susan Ryan  
 Mr. Thomas C. Sager &  
 Dr. Eugenie C. Scott •  
 George & Corinne Sakelarios •••  
 Ms. Glenda Sapra  
 Kenneth & Marjorie Sauer •  
 Ms. Mary Schaefer •  
 Ms. Anne Schafer •  
 Ms. Madeliene A. Scheiman ••  
 Mr. Peter Schick ••  
 Craig & Kymberly Schieferstein •  
 Mr. Benjamin Schiffrin •  
 Mr. Don Schmoldt &  
 Ms. Sally Walters •



Dr. Jeanette E. Schneider •  
 Dr. & Mrs. Paul Schneider ••  
 Ms. Susan Schramm &  
 Ms. Sheila Gavin  
 Mr. Robert Schwartz  
 Robert & Elizabeth Scott ••  
 Mr. Randy Scott •  
 Mr. Matthew Scott &  
 Ms. Margaret Fuller •  
 Mr. Douglas Sears •  
 Ms. Joan L. Seear •••  
 Bill & Judy Seiler •  
 Mr. Rich Sellman  
 Ms. Christina Sepich  
 Mrs. Sharon Seslowe  
 Mr. Robert Settle •  
 David Settle •  
 Mr. William Shanney •  
 Mr. Edward Shea ••  
 Ms. Anne Sheehan &  
 Mr. Craig Jones ••  
 Ms. Dorothy Shelburne •  
 Dr. & Mrs. Robert Sheldon •  
 Mr. Peter D. Shepherd ••  
 Mr. John R. Shepherd  
 Neil H. & Lisa A. Sherman  
 C. Blaine & Marian Shull ••  
 Ms. Connie Siegenthaler •  
 Mr. B. J. Siekiel-Zdzienicki  
 Peter & Caroline Simis ••  
 Mr. Duane K. Simshauser •  
 Mark Sinclair •

Ms. Patricia Singletary  
 Mrs. Marjorie Singleton •  
 Mr. Peter Slattery •  
 Mr. Stephen Smaby  
 Mr. Gerould H. Smith, Jr. •  
 Mr. Lawrence Smith •  
 Mr. Michael Smith  
 Mr. James B. Snyder •••  
 Dr. Don Snyder  
 Maggie Soffa-Jackson •  
 Mr. & Mrs. Robert H. Sollen  
 Ms. Dar Spain •  
 Mr. Scott Spear  
 Mr. Geoff Spellberg •  
 Mr. & Mrs. Donald H. Spencer ••  
 R & all & Patricia Spitze  
 Mr. & Mrs. Kenneth Springsteen ••  
 Susan & Robert Steele  
 Ms. Charlet Steffanni •  
 Mr. Charles F. Stender &  
 Mrs. Phyllis A. Stender  
 Ms. Jane Stephens •  
 Ms. Kathy M. Stewart •  
 Mr. James Stiglich ••  
 Tom & Kay Stoever •  
 Mr. Steve Stohlman •  
 Ms. Pamela Stones  
 Mr. James Stosick ••  
 Mr. Hank L. Stoutz ••  
 Ms. Cynthia Stribling &  
 Mr. Paul B. Webb ••  
 Dr. Norman Stump

Mr. Jon Sturtevant •  
 Ms. Raini Sugg &  
 Mr. Steve Vallarino •  
 Mr. John D. Sullivan •  
 Mr. Daniel F. Sullivan •  
 Ms. Bettye Swart •  
 R. B. Sweet •  
 Mr. Malcolm Swift •  
 Brian & Karen Swift  
 Norito & Takaye Takamoto •  
 Ms. Lillian Tallman •  
 Ms. Lois Tandy ••  
 Mr. Dave Tateosian •  
 Mr. Carson Taylor ••  
 Ms. Karen E. Taylor •  
 Willis & Katie Taylor &  
 Carsen & John Taylor  
 Mrs. Elinor Taylor & Mr. Jim Taylor  
 Mr. Bradley Te Paske  
 Ms. Caroline Thacher ••  
 Ms. Donna Scott Thomas •  
 Keith & Sharon Thompson •  
 Ms. Cathryn Thurow  
 L. R. & Susan Tittle •  
 Mr. Stephen Tivy •  
 Ms. Suzu Tokunaga •  
 Dr. E. Leroy Tolles  
 Mr. Breck Tostevin  
 Mr. Jon R. Tower  
 Catherine Trejo, M.D. •  
 Ms. Mary L. Turner ••  
 Ms. Cheryl Turner  
 Ms. Mari Tustin ••  
 Mr. William Van Der Ven •  
 Mr. David Van Flenker  
 Mr. Mitchell F. Van Hecke  
 Mr. James H. Van Houten  
 Ms. Sherrill Van Sickle  
 Mr. Rich Vedder  
 Dr. Robert Vestal & Jyl Hoyt •  
 Gary & Diane Vornoli •  
 Igor & Lee Vorobyoff ••  
 Mr. Peter Vorster ••  
 Ms. Kris Vyverberg •  
 Ms. Mary Wachtel ••  
 Ms. Nancy K. Waki •  
 Richard & Barbara Walton,  
 Walton Family Fund ••

Above: The 2012 Mono Lake Volunteers.

# 2012 DEFENSE TRUST & GUARDIANS OF THE LAKE

- = member for 10 or more years
- = member for 20 or more years
- = member for 30 or more years

Ms. Carol Warren •  
 Mr. Warren L. Watkins •  
 Mr. Howard Webb &  
 Mrs. Laurie Webb •  
 Ms. Nancy C. Wedel  
 Jean & Jeffrey Weiss •  
 Dr. Bob Westfall  
 Ms. Victoria Whitman ••  
 Mr. Clive Whitmore •  
 Mr. Larry Whitney •  
 Ms. Sherri Wiggins  
 Dr. Michael Wiley  
 Mr. Bradley Williams ••  
 Mark & Madelain Willman ••  
 Mr. Jeff Wilson •  
 Mr. David Winkler ••  
 Ms. Jennifer M. Winn &  
 Mr. Eugenio S. Aburto •  
 Mr. William S. Wise ••  
 Ms. Jane Gordon Wittmann •  
 Jorge & Corie Wong •  
 Ms. Joanne Woodard  
 Ms. Thais Wright  
 J. A. Wunderlich, III  
 James Wurgler, M.D. •  
 Ms. Karie Wyble  
 Ms. Iva Yoshimura  
 Helen Clyatt Yost •••  
 Ms. Brigid Young •  
 Mr. Norman Young  
 Mr. James R. Yurchenco &  
 Ms. Amy Lauterbach •  
 Ms. Ann Zack ••

Glen & Deborah Zepnick •••  
 Mr. Lewis Zuelow ••



Anonymous (10)  
 Bill & Mary Jane Abelung •  
 Mr. Leon M. Abrams •••  
 Mrs. June Adler •  
 Mr. Frank Alexander •  
 Mr. Michael Alexander &  
 Mrs. Beata Alexander  
 Mrs. Marilyn Allen •  
 Mr. David W. Alley  
 Mr. Gary H. Alton ••  
 Ms. Maria Alvarado  
 Grace & Bob Anderson ••  
 Mr. Gary Anderson •  
 Mr. George Anderson •  
 Ms. Anne R. Anderson  
 Ms. Linda M. Anderson  
 Mr. Bob Andrews  
 Ms. Susan Joy Aronson &  
 Ms. Daisy Allison  
 Mr. Keith G. Askoff ••  
 Mr. Rich Atwater & Mrs. Erin Atwater •

Mr. Robert W. Avakian •  
 Mr. Vic Avila  
 Mr. Gene Axelrod •  
 Ms. Margaret Rose Badger •  
 Mr. Harold Bailey ••  
 Ms. Jeanne Webber Baird •  
 Judge Joan L. Baker &  
 Dr. John L. Baker ••  
 Mr. Mark D. Baker •  
 Mr. Cory Barfield ••  
 Mary Harrington Barker •  
 Dr. Roger & Mrs. Lynne Barnes ••  
 Mr. Doug Barnett ••  
 Teresa & Don Barth ••  
 Ms. Maria Bastanchury •  
 Mr. Rob Bastien  
 Ms. Barbara Bazan ••  
 Karen Bearden  
 Mr. Fred Beck  
 Sally L. Beer •  
 Mr. Brendan Belby & Ms. Amber Stott  
 Ms. Mary Schug Belk ••  
 Shirley Bement  
 Ms. Carol L. Benedetti  
 Ms. Mildred Benioff •  
 Mr. John L. Bennett •  
 Chaplain John W. Berger •  
 Mr. & Mrs. George L. Berlacher •  
 Mr. Marty Berman &  
 Mrs. Jennifer Berman ••  
 Michel & Isabelle Bertin  
 Ms. Suzanne Bevash  
 Marc Beyeler & Elena Eger

Mr. Arturo Beyeler  
 Mr. Robert Billingsley ••  
 Gerald & Sherianne Bir •  
 Ms. Pat Bitton •  
 Judy & Jerome Blackman ••  
 Ms. Susan Blakely  
 Pat & Bill Bleha •  
 Mr. Bill Bloomer  
 Mr. Tudor M. Bogart  
 Mr. Ron Bohigian &  
 Mrs. Megan Bohigian  
 Mr. Donald R. Borchers  
 Ms. Sandy Bovee  
 Ms. Christine Bowman •  
 Ms. Betty F. Boykin •  
 John & Yvonne Branchflower •  
 Robert & Barbara Brandriff ••  
 Mr. Leigh Brasington ••  
 Pamela K. Braswell •  
 Mr. Arthur Braudrick  
 Mr. Michael Bregantic •  
 Mr. John E. Brennan  
 Mr. John Brenneis &  
 Mrs. Aida Brenneis •••  
 Ms. Patricia Brewer  
 Allan & Marilyn Brown ••  
 Dr. Elisabeth M. Brown  
 Dr. Melvin Brown & Anna Brown ••  
 Lauren & Susan Brown  
 Mr. Kenneth J. Brown •  
 Mr. Richard G. Brown •••  
 Mr. Robert M. Brown  
 Ms. Eva Brown •

Ms. Kris Brown & Mr. Scoby Zook •  
 Ms. Martha Brown •  
 Mr. Thomas Browne •  
 Mr. Bill Brumback  
 Larry & Amy Brunton •••  
 Ms. Mary Bryan  
 Roland & Joyce Bryan •  
 Ms. Maggie Bryant ••  
 Mr. Douglas R. Bryce  
 Doug & Lee Buckmaster •••  
 Mr. David L. Bulf  
 Mr. Jeff Burch &  
 Ms. Christine Weigen •  
 Dale & Suzanne Burger ••  
 Mrs. Marjorie Busch  
 Mr. Lynford Bushman •  
 Mrs. Nora Butler •  
 Ms. Diane Cadei  
 John Caito •  
 Mrs. Laura Goenne Callejon  
 Mr. Joshua Cameron &  
 Mrs. Alanna Cameron  
 Lester & Jill Cannon ••  
 Tom & Patricia Carano  
 Dave & Janet Carle •  
 Ms. Sue Carlisle  
 Daryl & Anne Carlson •  
 Ms. Jacqueline Carroll •  
 Mrs. Lina Carruth &  
 Mr. Dennis Carruth  
 Mr. Luke Castell  
 Ms. Kathy Cecere  
 Mr. Ed Cereda •

Jef Chadwick & Virginia Chadwick ••  
 Mr. Park Chamberlain •  
 Ms. Lyn Chambers ••  
 Nancy & Don Chambers •  
 Mr. Jeff Chavez &  
 Ms. Kandace Chavez  
 Mr. G. Christopher Cheney •  
 Mr. Murray Cherkas  
 Ms. Lynn Chiapella •  
 Mr. Louis C. Chiofalo ••  
 Ken & Andrea Chraft •  
 Ms. Virginia Christiansen •  
 Ms. Miriam Ciochon  
 Dr. Judy Clark & Mr. Rob Clark  
 Ms. Cindy Clark •  
 Mr. David E. Clay  
 Dr. John Crowley &  
 Dr. Linda Clements •••  
 Cary Cochrell •  
 Ms. Lotte Colbert  
 Ms. Allison Coleman  
 Mr. Jack R. Coleman-Levy ••  
 Ms. Lita Collins  
 Frankie Colmane  
 Daniel W. & Sharon R. Connor  
 Mr. Bryan Cook ••  
 Mr. Richard Cook & Mrs. Geri Cook •  
 Mrs. Linda Cook  
 Ms. Jeanne M. Cort •  
 Rick & Jane Costello •  
 Mrs. Cinny Cowgill &  
 Mr. Richard Cowgill  
 Mr. James F. Cox ••



Above: The storefront remodel got started with granite boulders and progressed to concrete being poured for plaza-style seating. Next came the intricately-welded frame for the concrete map of Mono Lake.

# 2012 GUARDIANS OF THE LAKE

Herb & Viki Craig •  
 Mr. Ron Craig  
 Ms. Joan Crishal •  
 Ms. Eileen Cross  
 Ken & Josephine Crowley •  
 Mr. Jack Crowther &  
 Mrs. Pat Crowther •  
 Mr. Kermit Cuff  
 Mr. Jarel Culver  
 Mr. Paul Curtis •  
 Dr. Glen Cutshall  
 Mr. Bruce Dau ••  
 Jan Davidson ••  
 Mr. Guy Davis  
 Mrs. Francesca Davis &  
 Mr. Donald Davis  
 Mrs. Susan Davis  
 Ms. Martha Davis •  
 Ms. Kathryn de la Roz  
 Mr. Ronald Dean •••  
 Donna Deaton •  
 Mr. Don M. Deck •  
 Joe & Christine Decker ••  
 Chris & Anne Degenhardt •  
 Mr. Daniel Denhart •  
 Ms. Frances M. Devlin ••  
 Catherine & Philip Diaconoff •  
 Mr. Francisco Diaz  
 Ms. Kathy Dice •  
 Dr. Jeffrey M. Dickemann •  
 Mr. Len Dickey ••  
 F. J. Dickinson •  
 Maureen & Robert DiDomenico ••

Mr. Mark Diekhans ••  
 Ms. Diane Diggins  
 Mr. Michael L. Dillon ••  
 Ms. Anne Dios  
 Ms. Susan Doelger ••  
 Mr. Patrick M. Donnelly •  
 Mr. Francis I. Donohoe  
 Ms. Jane Doyle  
 Linda Drake ••  
 Mr. Scott Drummond •  
 Msses. Gracia & Phyllis Drury •  
 Paul & Joan Dubow •  
 Ms. Janet Duerr &  
 Mr. Steven Schafer ••  
 Ms. Julie DuVall •  
 Mr. Keith Easthouse  
 Ms. Patricia Eastwood ••  
 Mr. Russell Edwards •  
 Mark & Jane Eiduson •  
 Mr. Richard Eilbert •  
 Mr. David S. Eiser •  
 Jack & Sue Ellis  
 Mr. Joe Enos •  
 Alan & Phyllis Entin •  
 Mrs. Caroline A. Erickson •  
 Hans & Diane Ernst ••  
 Mr. & Mrs. Dennis Escola •  
 Mr. Santiago M. Escruceria •  
 Ms. Audrey Evans  
 Ms. Janet Evans & Mr. Bruce  
 Cornelius •  
 Ms. Jeanne A. Evenden ••  
 Ms. Alexandria Fabbro ••

Valdis Boven & Mark Fahey •••  
 Mr. Terry Farmer  
 Mr. Neal Feuerman •  
 Carrie & George Fields •  
 Mr. Charles Figone •  
 Mr. Bob Finch  
 N. L. Fogelstrom  
 Ms. Conny Ford & Mr. David Walsh •  
 Mrs. Patricia A. Foster •  
 Ms. Myra Foster •  
 Mr. George Foxworth  
 Mr. Bernard Franklyn  
 Mr. Jon Freidline  
 Mr. Terry Frewin •  
 Mr. Michael Frye  
 Ms. Janet Fuqua  
 Edith Gaines •••  
 Ms. Marilyn Gallaway &  
 Dr. Robert Lowen ••  
 Ms. Nancy J. Gardner •  
 Mr. Dewitt Garlock &  
 Mrs. Shanti Garlock  
 Mrs. Jan Garrison ••  
 John & Andrea Dickey Genette •  
 Mr. Scott Gentile  
 Mr. Vern Gersh &  
 Ms. Terry McLaughlin •  
 Mr. Jim Gilbert & Ms. Susan Orbuch •  
 Mrs. Faye Gillett •  
 Ms. June Ginger •  
 Mr. & Mrs. Raymond Gipson •  
 John & Alison Goers •  
 Mr. Jeffrey A. Goettig •

Mr. Al Goggins ••  
 Mr. Bob Good &  
 Mrs. Jennifer S. Good  
 Mr. Paul Goodwin •  
 Ms. Susan I. Gottlieb •  
 Luise Graff & C. Allen Bush ••  
 Mr. Steve Graham ••  
 Ms. Ann D. Graham •  
 Mrs. Jill Grahek  
 Ms. Cornelia Gramms •  
 Mr. Tom Gray •  
 Mr. Allen Green ••  
 Ms. Hazel T. Green ••  
 Ms. Helen A. Green •••  
 Ms. Marlys T. Green •  
 Ms. Katherine Greene  
 Ms. DeEtta Greenwalt •  
 Jeanne Griffith •  
 Mr. David E. Griffiths ••  
 Ms. Betty Groce •  
 Beverly Grunder •  
 Mrs. Wilma Guardia •  
 Mr. John Hagelis  
 Dale & Coleen Hall •  
 J. B. Hall ••  
 Joel Hall •••  
 Mr. David Hall •  
 Mr. Lloyd Hamill & Mrs. Rose Hamill  
 Mr. Mark Hamilton  
 Mr. Joseph A. Hammer ••  
 Mr. Stephen Hammond ••  
 Ms. Jill A. Hanna •  
 Mr. Tom Hanton ••

Mr. Edward J. Hard •  
 Tom & Kathy Harrington •  
 Joyce C. Harris •  
 Mr. Charles Harris •  
 Mr. John Harris •••  
 Mr. Paul R. Harris  
 Mr. Douglas Hart  
 Mr. Duane Hartley  
 Mr. Joseph B. Harvey &  
 Mrs. Donna Harvey •  
 Mr. Jerry Hauke •  
 Mr. Donald Haworth •  
 Dwight Sims & Cathie Haynes •  
 Clyde & Patricia Hazen  
 Mrs. Nicole Headrick &  
 Mr. Jerry Headrick, Jr.  
 Mr. Scott C. Heeschen ••  
 Richard & Beatrice Heggie ••  
 Ms. Sarah Heilemann  
 Scott & Claudia Hein •  
 Mr. John Heinsius  
 CleoBell Heiple-Tice •  
 Mr. James T. Held &  
 Ms. Sachiko Kohatsu  
 Ms. Luanna Helfman  
 Ms. Joy Hemp & A Positive Balance •  
 Mrs. Gene Hensley •  
 Mrs. Shanta Herzog •  
 Ms. Nancy Hiestand ••  
 Mr. Lynn Higbee &  
 Mrs. Nancy Higbee •  
 Mr. Jerry Higgins •  
 James & Marilyn Hildebrandt •

Mr. Kenneth W. Hilmer  
 Mrs. Eileen Hinkson •  
 Mr. Ronald Hochede •  
 Mrs. Barbara Hoffman  
 Arno R. Hohn, M.D. •  
 Ms. JoAnn Holbrook  
 Ms. Kathryn Holley •  
 Ms. Caryn Holmes •  
 Ms. Christine K. Holmstrom •  
 Larry & Carol Holt •  
 Paul & Karen Honeywell •  
 Ms. Mary M. Hook ••  
 Mr. Carlen Hoppe •  
 Ms. Catherine Owen Horne •  
 Ms. Joanne E. Horton •  
 Mr. Paul Hovsepian  
 Jerri Howard  
 Mr. Richard Howard &  
 Mrs. Mary Howard ••  
 Skip & Evelyn Howard  
 Mark & Mary Hoyt ••  
 Mark & Trish Hucklebridge  
 Mrs. Phelps S. Hunter •  
 Mr. Stephen Hutchinson &  
 Mrs. Audrey Hutchinson •  
 Ms. Michele Idera ••  
 Ms. Heather Ingraham •  
 Dr. & Mrs. Charles Irvin •  
 Mr. Paul Isaacs  
 Mr. & Mrs. W. H. Jackson ••  
 Ms. Kate Jackson •  
 Rob & Liz Jackson ••  
 Mr. Greg Jacobs



Above: Once the concrete Mono Lake map was completed, the storefront got Trex decking, the wheelchair lift, drinking fountain, redwood pergola, and planters.

# 2012 GUARDIANS OF THE LAKE

- = member for 10 or more years
- = member for 20 or more years
- = member for 30 or more years

Mr. Richard Jacobs &  
Ms. Linda Lawley •

Mr. David Jacobson •  
Jeffrey & Linda Jahraus

Mr. Robert Jarrett &  
Mrs. Wanda L. Jarrett

Mr. Mark Jayne

Ms. Brielle Johnck &  
Mr. Stephen Schmidt ••

Mr. Jon A. Johnsen

Ms. Cynthia L. Johnson &  
Mr. Allen Perry ••

Ms. Lucy Johnson

Richard & Joyce Johnson •

Abigail L. Johnston & Stephen Fotter •

Mr. Larry Johnston &  
Mrs. Karen Johnston

Mr. Kenneth Jones •

Ms. Peggy Jones

Ms. Jean P. Jones

Ms. Renee Jones •

Mr. Kirke Jorgensen •

Mr. Toby Jurovics

David A. Kadish •

Ms. Kathleen Kahn ••

Ms. Sharon Kamiya

Mr. Branislav Kecman •

Joanne & Dennis Keith ••

Ms. Joanna E. Kenney •

Ms. Barbara Keogh

Mr. Robert Kerr

Ms. Kathryn Kettler •

Ms. Stephanie Key &  
Mr. David Mollenauer

Mr. Bryan Edward Kilfoil

Mr. Robert Kimberling •

Duncan & Ellen King ••

Dr. Stefan J. Kirchanski •

Mr. Kevin Kitz •

Britt Klingenberg

Ms. Julie Klingmann •

Roger & Georgia Klinkers •

Mr. Charles E. Kollmann •

Attila Konzol •

Ms. Cheryl Korte

Ms. Margaret Kortes •

Mr. Rudolph Kosits &  
Mrs. Cheryl Kosits ••

Mr. Jack E Kotlar

Mr. Michael Kraus &  
Ms. Nancy Sasser •

Bill & Ginger Krelle •

Mrs. Elaine Kresan •

Ms. Sally Kubo •

Ms. Rebecca Kuga

Mr. Charles Y. Kuntzman ••

Mr. Manfred Kusch ••

Mr. Philip D. La Riviere, Jr. ••

Robert & Barbara Lagas •

Ms. Gloria L. Laird •

Ms. Jane Lamph •

Mr. Jerome Landesman

Mr. Don Lasater

Mr. Bill Laughton

David & Sue Lauritzen ••

Guy & Gail Lefebvre ••

Jeanette & Olaf Leifson ••

Ms. Caroll Lemieux

Karen & Skye Leone •

Mr. Douglas Leslie •

Ms. Nancy Leventon

Mr. Christer Lewenhaupt

Mr. Gregory S. Lewis •

Ms. Amy Lewis •

Leslie & Cynthia Lieurance •

Mr. Arthur L. Lillund

Barret Lilly

Dr. John Little •

Mrs. Mary Ljung & Mr. John Ljung

Mr. Maynard H. Lobell •

Ms. Hildy Logan •

Mr. Paul Lonac ••

Greg & Mary Lugo •

Mr. Robert H. Lynn ••

Ms. Mary E. Lynn •

Jason Macario

Mr. Gordy MacDermott •

Yaney L. A. MacIver •

Dr. Bruce MacMillan

Mr. Alan Magree ••

Mr. Jim Mahoney •

Hildegard Manley •

Mr. E. Christopher Maple

Mr. Cliff Marcussen ••

Mr. Dave Marquart ••

Mrs. Esther A. Marquart •

Phillips & Emily Marshall ••

G. Steven & Gail R. Martin •

Ms. Marian T. Martinez

Piero & Jill Martinucci •

Mr. Daniel Matarozzi &  
Ms. Sharon Hawley ••

Mr. Fred Mathis •

Ms. Ann Abbott Matteson •••

Ms. Mary A. Matthews ••

Mr. John E. Mawby •••

Mr. Kerry A. Mayer •

Ms. Elaine Mazer

Ms. Eleanor McCalla •

Drew McCalley ••

Ms. Deborah McCleister &  
Ms. Lydia Emard •

Ms. Nobuko McClure •

Roger & Judy McClure •

Mr. Robert McCoy &  
Mrs. Stacey McCoy

Mrs. Beverly McCurdy •

Betsy & Harold McDonald

Malcolm & Patricia McGregor •

Mr. John/Jack McKellar ••

Ms. Bobbi McLaughlin

Ms. Sigrid McLaughlin

Ms. Barbara McLeary •

Ms. Lynn McLeod •

Geoffrey McQuilkin &  
Sarah Taylor •••

Ron Mead

Ms. Martha Meade

Mr. Arthur L. Meader, III

Mr. William F. Meadows •

Patrick & Ann Megowan •

Mr. Richard P. Meixner

Michael & Ellen Mellon •

Ms. Nancy Menken •

Mrs. Terri Middlemiss ••

Ms. Connie Millar •

Kelly & Bartshe Miller •

Mr. Alan Magree ••

Mr. Robert Miller

Ms. Alice Miller & Ms. Avis Boutell •

Ms. Kay Millspaugh &  
Ms. Cathi Scarpa ••

Dr. Dwane Milnes

Ms. Mia Monroe •

Gil & Suzette Montano •

Ms. Shirley Morano ••

Dr. Kevin K. Morrison •

Frances Morrison •

Mr. Ronald Morrison ••

Ms. Marty Mosman •

Mr. Doug Mounter &  
Mrs. Jenny Mounter

Ms. Jeanne Mudrick •

Ms. Kathleen A. Mugele ••

Ms. Susanne Mulcahy &  
Ms. Jan Raissle •

Mr. Dennis Mulligan ••

Ms. Donna Muollo ••

Ms. Judith Muraki

Ms. Tanya Narath ••

Steve & Ruth Nash ••

Ms. Lynn Nebus

Mr. Paul Neff

Ms. Vivian T. Nelson

Mr. Klaus Neumann ••

Robert & Elizabeth Neuwirth ••

Martin & Barbara Nicholas •

Mr. John Nieto

Ms. Bonnie J. Nishikawa

Mr. Gary L. Nofziger ••

Mr. Andrew L. Nordquist •

Brian Nordstrom •

Malcolm & Debbie North •

Mr. & Mrs. Michael Henstra ••

Mr. Ben Novak

Ms. Mary Beth Novak

Ms. Kathleen Novotny

Dr. Cassandra Nunez

Ms. Miriam Nunnally ••

Mr. Allan O'Connor &  
Mrs. Cindy O'Connor •

Mr. Dana Kim Ogburn •

Ms. Mary Ohlson

Ms. Patricia Oliver •

Mr. Paul O'Neil &  
Mrs. Sally Flory-O'Neil •

Ms. Deborah Orcutt •

Ms. Jeni Ostroska ••

Ronald & Phoebe Ozuna •

Antoinette Padgett ••

Mrs. Tonya Palm

Ms. Carolyn S. Palmer ••

Ms. Vickilyn Pard

Mike & Laura Parker ••

Carla B. Parsons •

Nancy & Ray Parsons

Ms. Bessie C. Patton ••

Dr. & Mrs. Thomas T. Paukert •

Mr. Robert R. Pavese •

Ms. Nancy Pease •

Ms. Elizabeth A. Pelling •

Mr. Kirk Alan Pessner &  
Dr. Russell H. Miller •

Ms. Cynthia Peters •

Ms. Rachel Peters

Ms. Eileen Peterson •

Mr. Trey Petrey

Mr. John Petter

Ms. Pamela Pierson

Ms. Janis Portal

Mr. Mark Poteet •

Mr. Derek D. Poultney •

Mrs. Leslie Prestwood ••

Mr. Maurice C. Price •

Ms. Jennifer Ann Price &  
Mr. Tony Hunter •

Mr. Jerry E. Prochazka •

Ms. Linda Puffer ••

Lee Purvis

Ms. April Quigley •

Mr. Shannon Raby •

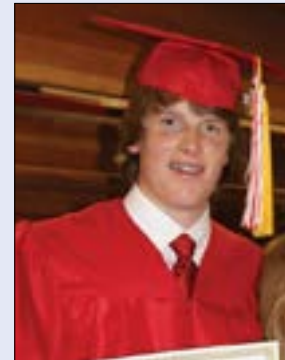
Mr. Bob Raczkowski •

Ms. Peggy Radel •

Mr. David Rader

## MONO LAKE SCHOLARSHIPS

The Committee is proud to support the local community by awarding \$1,000 worth of scholarships annually to college-bound high school graduates.



2012 Mono Lake Committee Scholarship recipients Natasha McCullough and Alek McKee of Lee Vining High School. Cory Forbes (Lee Vining High School) and Cavanagh Gohlich (Coleville High School) also received scholarships in 2012.

# 2012 GUARDIANS OF THE LAKE

Ms. Sarah E. Ramsay •  
 Roger & Susan Ranuio •  
 Mr. Randall Rasmussen  
 Mr. Walter Read  
 Mr. Charles Reed, Jr. &  
 Mrs. Roberta Reed •  
 Mrs. Nancy Reed  
 Richard & Patricia Reed •  
 Rose Reis-Jackson •  
 Mr. Mark Reppert ••  
 Mr. Robert W. Reynolds  
 Mr. Alan Rhodes •  
 Mr. David Rice •••  
 Mr. Jack Rich •  
 Ms. Ida Richards •  
 Mr. Douglas S. Richter •  
 Mr. Michael O. Riese  
 Mr. John Rigter &  
 Ms. Kathryn Brown •••  
 Robert & Erika Riley •  
 Dr. Jordan S. Rinker ••  
 Ms. Lynn Roberts ••  
 Ms. Robin Roberts &  
 Ms. Erica Chapin ••  
 Ms. Nancy J. Robertson ••  
 Mike & Sue Robinson •  
 Mr. James J. Robinson  
 Mr. Glenn Robison  
 Mr. Marcel Rodriguez •  
 Mr. Ralph Rogers  
 Mr. Thomas Rogers  
 Mr. Stephen Roscow •  
 Mr. Daniel C. Rose •  
 Ms. Shelli B. W. Rose ••  
 Ms. Susan Rose •  
 Ms. Gillian Rowley  
 Ms. Sheila Rudolph &  
 Mr. William B. Rudolph •  
 Mr. Richard L. Russell  
 Michael & Karen Rutter ••  
 Ms. Jennifer Rycenga •  
 Mr. Thomas C. Sager &  
 Dr. Eugenie C. Scott •  
 George & Corinne Sakelarios •••  
 Ms. Esther Sanchez  
 Mr. Dana Sanderson ••  
 Ms. Jean Savage •  
 Jo Schaefer

Ms. Mary Schaefer •  
 Peter & Nancy Schellenbach ••  
 Ms. Susan Schen  
 Mrs. Julia Schenck &  
 Mr. Gary Schenck  
 Craig & Kymberly Schieferstein •  
 Ms. Mary Ann Schlegel  
 Mr. Robert L. Schneider ••  
 Ms. Joanne E. Schneider •  
 Mr. David Schneiderman  
 Dr. Ernest H. Schreiber &  
 Mrs. Cadence Schreiber  
 Ms. Barbara Schremp •  
 Ms. Beverly Schroeder •  
 Robert & Cynthia Schulze •  
 Mr. Douglas S. Schwartz ••  
 Mr. Randy Scott •  
 Charles & Kate Segerstrom •  
 Ms. Janet Serino •  
 Bryan & Pat Sesser •  
 David Settle •  
 Ms. Diane Shakal  
 Ms. Carole J. Shannon •  
 Mr. David Sharp  
 Ms. Pauline F. Shaver •  
 Ms. Cindy Shaw ••  
 Dr. Neal K. Sheade •  
 Mr. John R. Shepherd  
 Ms. Janet R. Sherwin  
 William A. Shockley •  
 Mr. & Mrs. Ronald Shurtz •  
 Mr. Peter Shwartz •  
 Ms. Beth Sibley •  
 Ms. Kathleen Sidaris •  
 Ms. Jan Simis •  
 Mr. Duane K. Simshauser •  
 Mark Sinclair •  
 Mrs. Nordi Sloman ••  
 Mr. Donald M. Smith ••  
 Mr. Vic Smith •  
 Ms. Audria E. Smith ••  
 Ms. Pat Smith  
 Dr. Michael Sneary •  
 Mr. Herschel Snodgrass •  
 Mr. Kenneth D. Snow •  
 Ms. Margaret Songster •  
 Ms. Jacquelyn Spacek ••  
 Mr. Dale Spencer & Ms. Keri Bruser

Julie Spengler •  
 Helmuth & Sigrid Spieler •  
 Randall & Patricia Spitze  
 Mr. Larry Spivak  
 Mr. & Mrs. Kenneth Springsteen ••  
 Ms. Beverly Squaglia &  
 Ms. Lydia Squaglia  
 Mr. Dave Stachowski &  
 Mrs. Rita Stachowski  
 Mr. Harrison Starr •••  
 Mr. Max Stauffer  
 Mrs. Michelle Stauffer •  
 Ms. Charlet Steffanni •  
 Mr. Howard Steffens •  
 Ms. Ruth Steffensen •  
 Mr. John A. Steinbacher •••  
 Mr. Charles F. Stender &  
 Mrs. Phyllis A. Stender  
 Frank & Marie-Agnes Stephens •  
 Mrs. Phyllis Stephenson ••  
 Ms. Delores Stevens  
 Glenn R. Stewart, Ph.D.  
 Mr. Blair Stewart  
 Georgia Stigall •••  
 Mr. Harold Stoddard  
 Mr. Hank L. Stoutz ••  
 Robin Stowe  
 Ms. Helga Martin Strong •  
 Mr. David Stukey  
 Mr. Jon Sturtevant •  
 Mr. John D. Sullivan •  
 Ms. Bettye Swart •  
 R. B. Sweet •  
 Paul & Bonnie Belle Swinderman ••  
 Dennis & Jan Switick •  
 Norito & Takaye Takamoto •  
 Ms. Laurie Z. Tavan •  
 Mrs. Barbara Taylor &  
 Mr. Laurence Taylor •  
 Tony & Sherryl Taylor •  
 Mr. Bradley Te Paske  
 Mr. Christopher Tenney &  
 Ms. May Gong •  
 Mr. Edwin F. Terry  
 Ms. Sandra Thayer  
 Ms. Georgette Theotig ••  
 Ms. Ellen E. Thompson •  
 Ms. Laura Thompson •

P. B. & C. P. Thompson  
 Ms. Dorothy A. Thomson &  
 Ms. Katherine Downey •  
 Ms. Mary Thornton  
 Ms. Kathleen Threfall ••  
 Mr. Peter C. Todebush ••  
 Ms. Suzu Tokunaga •  
 Dr. E. Leroy Tolles  
 Mr. Breck Tostevin  
 Catherine Trejo, M.D. •  
 Mr. Jack Troup •  
 Ms. Laraine Turk •  
 Ms. Mary L. Turner ••  
 Mr. Warren Unck •  
 Fred & Karen Valentine  
 Mr. William Van Der Ven •  
 Mr. David Van Flenker  
 Mr. Mitchell F. Van Hecke  
 Mr. James H. Van Houten  
 Dr. Robert Vestal & Jyl Hoyt •  
 Mr. John Vondracek •  
 Glenn R. Stewart, Ph.D.  
 Mr. Blair Stewart  
 Georgia Stigall •••  
 Mr. Harold Stoddard  
 Mr. Hank L. Stoutz ••  
 Robin Stowe  
 Ms. Helga Martin Strong •  
 Mr. David Stukey  
 Mr. Jon Sturtevant •  
 Mr. John D. Sullivan •  
 Ms. Bettye Swart •  
 R. B. Sweet •  
 Paul & Bonnie Belle Swinderman ••  
 Dennis & Jan Switick •  
 Norito & Takaye Takamoto •  
 Ms. Laurie Z. Tavan •  
 Mrs. Barbara Taylor &  
 Mr. Laurence Taylor •  
 Tony & Sherryl Taylor •  
 Mr. Bradley Te Paske  
 Mr. Christopher Tenney &  
 Ms. May Gong •  
 Mr. Edwin F. Terry  
 Ms. Sandra Thayer  
 Ms. Georgette Theotig ••  
 Ms. Ellen E. Thompson •  
 Ms. Laura Thompson •

C. A. Wight & Suzanne Wight  
 Dr. Michael Wiley  
 Chester & Sandra Wilkinson ••  
 Ms. Nancy Wilkinson •  
 Stuart Wilkinson & Sue Johnston •  
 Mr. Fred Willbanks •  
 Robert & Donna Willey  
 Dr. Elizabeth Kennon Williams  
 Michael & Evelyn Williams •  
 Ms. Alice Williams  
 Mr. Urs Willmann &  
 Mrs. Rosemarie Willmann  
 Mr. Budd Willis  
 Mr. Jim Wilson &  
 Mrs. Harriet Wilson ••  
 Mr. Joel Wilson •  
 Ms. Patricia Wilson •  
 Mr. Gerry Winant & Ms. Ann Sanders  
 Ms. Hope Lynn Winokur  
 Mr. Ray Winter •  
 Ms. Kirsten Winter ••

Ms. Jane Gordon Wittmann •  
 Mr. P. J. Wolf & Mrs. Nyla Wolf •  
 Dr. James B. Wood ••  
 Ms. Leslie Wood  
 Pamela & Gary Woodward  
 Ms. Thais Wright  
 James Wurgler, M.D. •  
 Ms. Karie Wyble  
 Ms. Holley Wysong  
 Ms. Joyce Yaffe  
 Helen Clyatt Yost •••  
 Mr. Michael Young  
 Ms. Bridget Young •  
 Ms. Ann Zack ••  
 Ms. Virginia Zapp  
 Ms. Linda S. Zazzana •  
 Glen & Deborah Zepnick •••  
 George & Lora Zilinsky  
 Joseph & Joan Zinkl  
 Mr. Emil Zollinger ••



Above: The 2012 Mono Lake Committee staff. Long live Mono Lake!



**Mono Lake Committee  
Office & Headquarters**

Post Office Box 29  
Lee Vining, California 93541  
(760) 647-6595

**Mono Lake Committee  
Information Center & Bookstore**

Highway 395 at Third Street  
Lee Vining, California 93541  
(760) 647-6595

**Los Angeles Office**

1718 Wellesley Avenue  
Los Angeles, California 90025-3634

*info@monolake.org*  
*monolake.org*  
*monobasinresearch.org*